

MONUMENT 21E

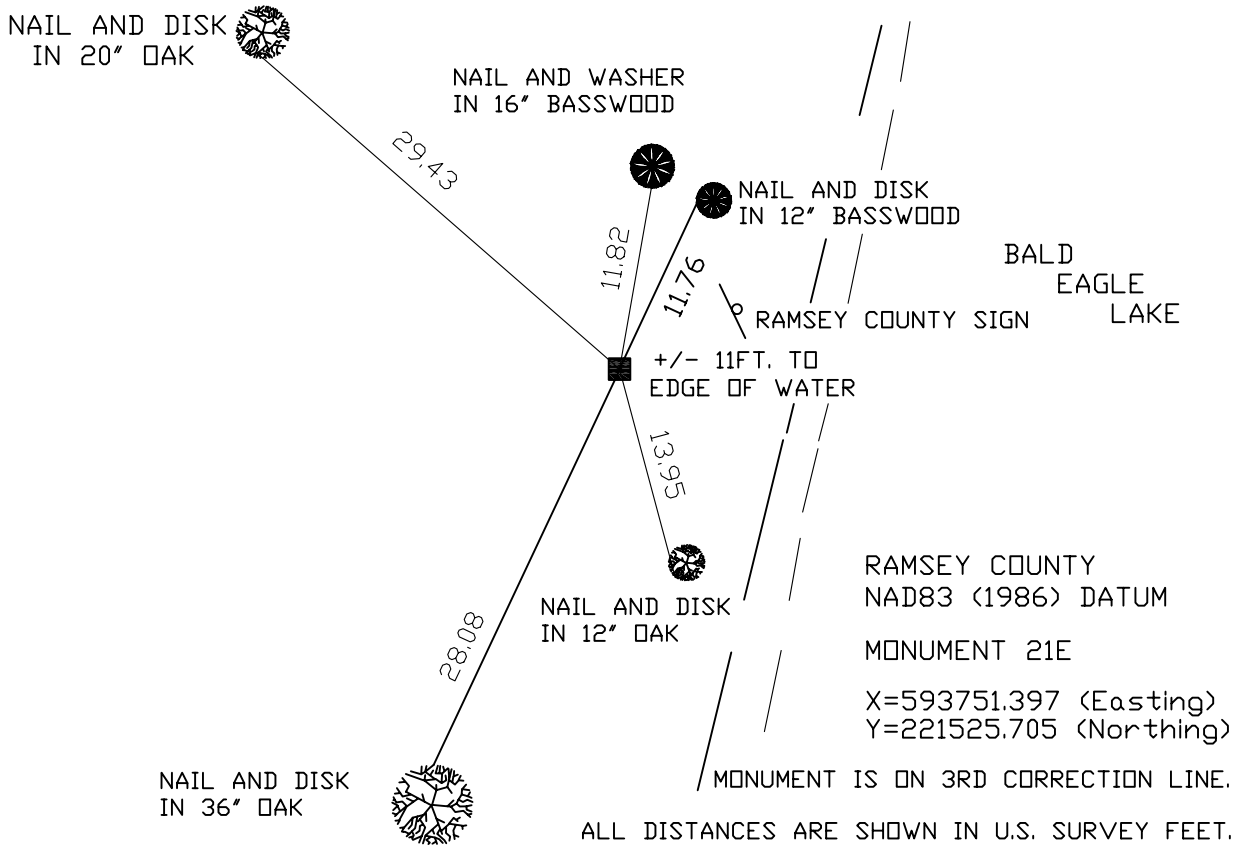
CERTIFICATE OF LOCATION OF GOVERNMENT CORNER

Meander Corner No. 14, Section 2, Township 30 North, Range 22 West, County of Ramsey, State of Minnesota.

At the corner location shown on the sketch

- On August 15, 2006 found a granite monument, (1349.91 ft. east of monument 21SC).
- left monument as found, lowered monument, removed monument (explain)
- On _____ placed a _____

SKETCH OF REFERENCE TIES



Statements of evidence relative to this corner are on the following page(s).

I hereby certify that this document and the data contained herein was prepared by me or under my direct supervision this _____ day of _____, 20____.

SIGNATURE

Minnesota License No. _____

- Land Surveyor Professional Engineer
 County Surveyor County Engineer

OFFICE OF COUNTY SURVEYOR

County of Ramsey

I hereby certify that this document was filed in the County Surveyor's office on the _____ day of _____, 20____.

David D. Claypool, P.L.S., County Surveyor

By _____, Deputy

MONUMENT 21E

Found granite up 0.2 ft.; retied, May 6, 1974.

Found granite; appears to be leaning west; retied, September 22, 1998.

Retied granite monument, August 15, 2006.