

MONUMENT 211

CERTIFICATE OF LOCATION OF GOVERNMENT CORNER

Southeast Corner of Section 23, Township 30 North, Range 23 West, County of Ramsey, State of Minnesota.

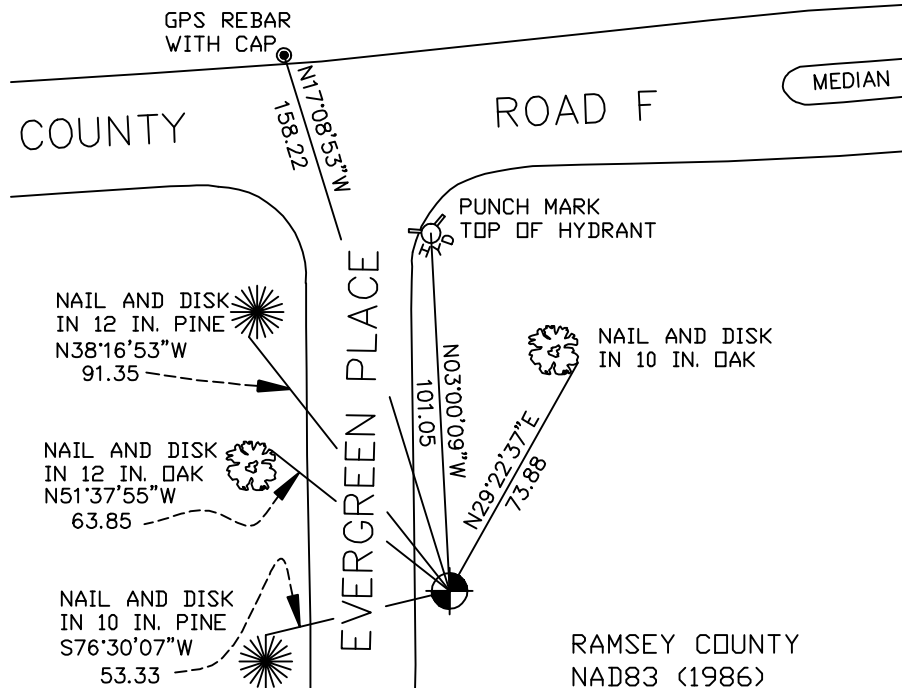
At the corner location shown on the sketch

On June 19, 2006 found a cast iron monument.

left monument as found lowered monument removed monument (explain)

On _____ placed a _____

SKETCH OF REFERENCE TIES



RAMSEY COUNTY
NAD83 (1986)
MONUMENT 211

ALL DISTANCES ARE SHOWN IN U.S. SURVEY FEET.
BEARINGS ARE FOR TIE REFERENCE PURPOSES ONLY.

X = 566288.558 (Easting)
Y = 199887.754 (Northing)

Statements of evidence relative to this corner are on the following page(s).

I hereby certify that this document and the data contained herein was prepared by me or under my direct supervision this _____ day of _____, 20____.

SIGNATURE

Minnesota License No. _____

County Surveyor Land Surveyor

OFFICE OF COUNTY SURVEYOR

County of Ramsey

I hereby certify that this document was filed in the County Surveyor's office on the ____ day of _____, 20____.

David D. Claypool, P.L.S., County Surveyor

By _____, Deputy

MONUMENT 211

Found granite monument, down 1 in., retied, October 23, 1974.

**Monument destroyed; replaced with 20 in. cast iron monument,
June 13, 1988.**

Retied monument, down 0.6 ft., May 10, 1989.

Retied monument, November 25, 2002.

Retied monument, June 19, 2006.