

# MONUMENT 184

## CERTIFICATE OF LOCATION OF GOVERNMENT CORNER

East Quarter Corner of Section 22, Township 30 North, Range 23 West,  
County of Ramsey, State of Minnesota.

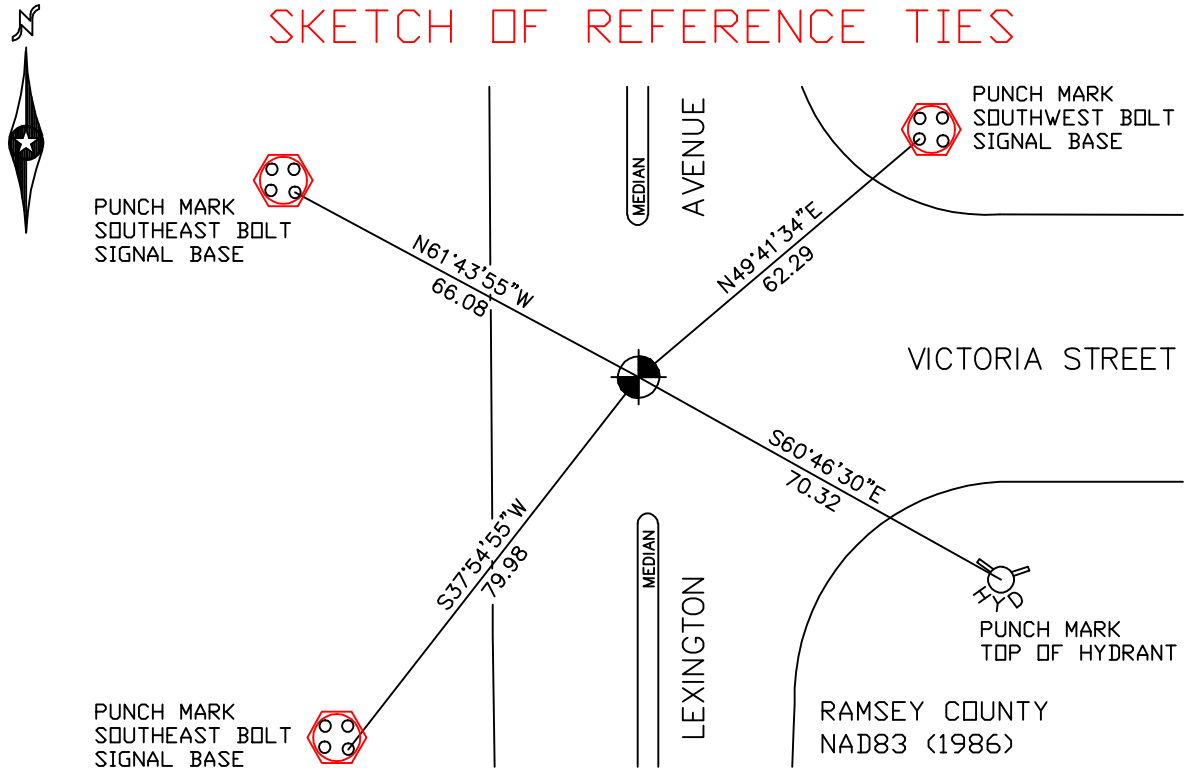
At the corner location shown on the sketch

On June 13, 2006 found a cast iron monument within a cast iron manhole  
assembly.

left monument as found     lowered monument     removed monument (explain)

On \_\_\_\_\_ placed a \_\_\_\_\_

### SKETCH OF REFERENCE TIES



ALL DISTANCES ARE SHOWN IN U.S. SURVEY FEET.  
BEARINGS ARE FOR TIE REFERENCE PURPOSES ONLY.

X = 560991.657 (Easting)  
Y = 202479.325 (Northing)

Statements of evidence relative to this corner are on the following page(s).

I hereby certify that this document and the data contained herein was prepared by me or under my direct supervision this \_\_\_\_\_ day of \_\_\_\_\_, 20\_\_\_\_.

SIGNATURE

Minnesota License No. \_\_\_\_\_

County Surveyor     Land Surveyor

OFFICE OF COUNTY SURVEYOR

County of Ramsey

I hereby certify that this document was filed in the County Surveyor's office on the \_\_\_\_ day of \_\_\_\_\_, 20\_\_\_\_.

David D. Claypool, P.L.S., County Surveyor

By \_\_\_\_\_, Deputy

## MONUMENT 184

**Found iron in concrete, granite monument down 0.54 ft.; set short (4 3/8 in.) cast iron monument, July 17, 1975.**

**Retied monument, July 28, 1975.**

**Retied monument flush, January 22, 1992.**

**Retied monument flush, December 2, 1998.**

**Monument removed for construction, August, 2005.**

**Reset short (4 3/8 in.) cast iron monument, in concrete, down 9 in. within a cast iron manhole assembly, May 24, 2006.**

**Retied monument, June 13, 2006.**