

MONUMENT 172E

CERTIFICATE OF LOCATION OF GOVERNMENT CORNER

Meander Corner No. 4, Section 14, Township 30 North, Range 22 West, County of Ramsey, State of Minnesota.

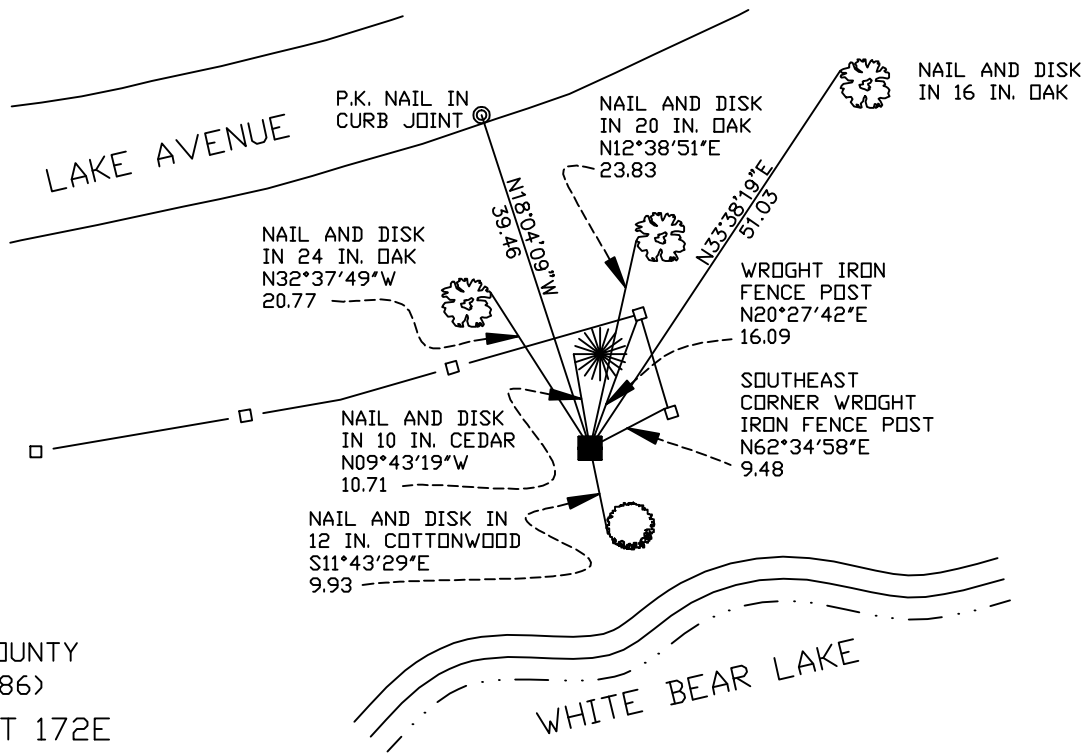
At the corner location shown on the sketch

On August 23, 2006 found a granite monument, down +/-1.0 ft.

left monument as found lowered monument removed monument (explain)

On _____ placed a _____

SKETCH OF REFERENCE TIES



RAMSEY COUNTY
NAD83 (1986)
MONUMENT 172E

X= 595669.308 (Easting)
Y= 205257.217 (Northing)

ALL DISTANCES ARE SHOWN IN U.S. SURVEY FEET.
BEARINGS ARE FOR TIE REFERENCE PURPOSES ONLY.

Statements of evidence relative to this corner are on the following page(s).

I hereby certify that this document and the data contained herein was prepared by me or under my direct supervision this _____ day of _____, 20____.

SIGNATURE

Minnesota License No. _____

County Surveyor Land Surveyor

OFFICE OF COUNTY SURVEYOR

County of Ramsey

I hereby certify that this document was filed in the County Surveyor's office on the ____ day of _____, 20____.

David D. Claypool, P.L.S., County Surveyor

By _____, Deputy

MONUMENT 172E

Found granite monument, down +/- 1 ft., June 12, 1975.

Tied monument, down +/- 2.5 ft., June 15, 1990.

Retied monument, down +/- 2.0 ft., September 28, 1999.

Set sign and post, 8 in. south of monument, October 25, 1999.

Retied monument, August 23, 2006.