

MONUMENT 147

CERTIFICATE OF LOCATION OF GOVERNMENT CORNER
Center of Section 14, Township 30 North, Range 22 West,
County of Ramsey, State of Minnesota.

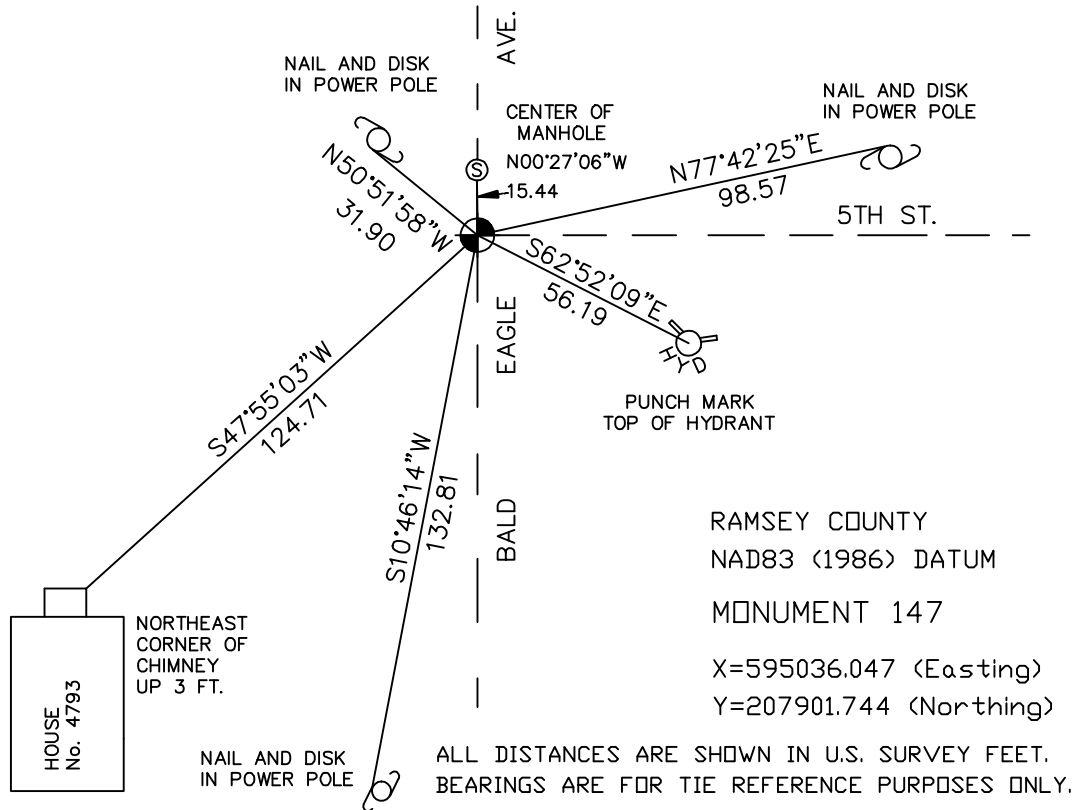
At the corner location shown on the sketch

On August 23, 2006 found a cast iron monument, within a cast iron manhole assembly.

left monument as found, lowered monument, removed monument (explain)

On _____ placed a _____

SKETCH OF REFERENCE TIES



Statements of evidence relative to this corner are on the following page(s).

I hereby certify that this document and the data contained herein was prepared by me or under my direct supervision this _____ day of _____, 20____.

SIGNATURE

Minnesota License No. _____

- Land Surveyor Professional Engineer
 County Surveyor County Engineer

OFFICE OF COUNTY SURVEYOR

County of Ramsey

I hereby certify that this document was filed in the County Surveyor's office on the ____ day of _____, 20____.

David D. Claypool, P.L.S., County Surveyor

By _____, Deputy

MONUMENT 147

Found a granite monument, down 0.1 ft., May 21, 1974.

Retied monument, October 10, 1974.

Found a cast iron monument, down +/- 0.1 ft. and retied, January 24, 1992.

Tied out monument for removal by the city, August 1, 1995.

Relocated position and set P.K. nails, July 23, 1996.

Set a 20 in. cast iron monument, down 18 in., within a cast iron manhole assembly, March 30, 1999.

Retied monument, September 23, 1999.

Retied monument, November 15, 2004.

Tied out monument for future construction removal, August 23, 2006.