

# MONUMENT 122N

## CERTIFICATE OF LOCATION OF GOVERNMENT CORNER

Monument on the North-South Quarter Line of Section 11, Township 30 North, Range 22 West, County of Ramsey, State of Minnesota.

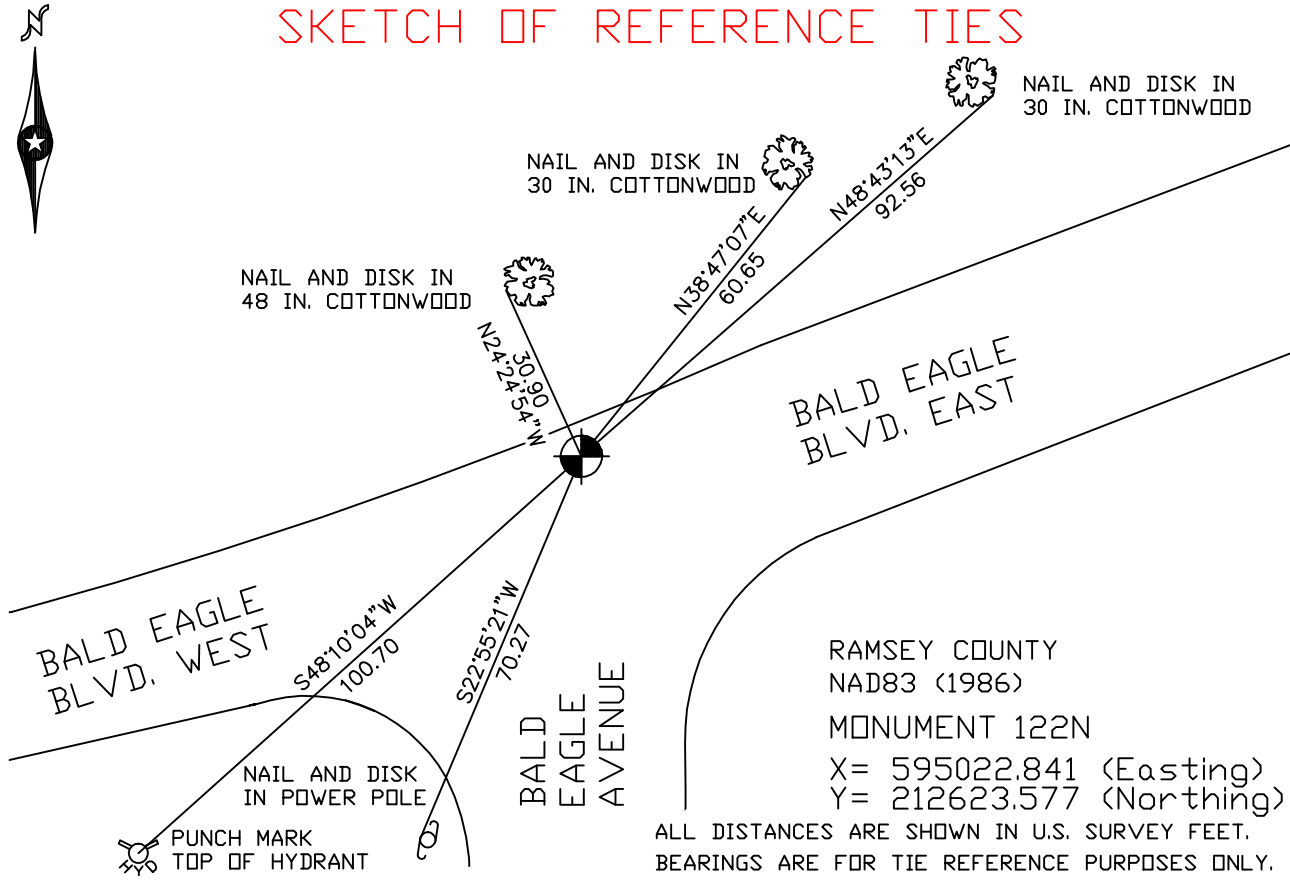
At the corner location shown on the sketch

On June 15, 2006 found a cast iron monument.

left monument as found     lowered monument     removed monument (explain)

On \_\_\_\_\_ placed a \_\_\_\_\_

### SKETCH OF REFERENCE TIES



ALL DISTANCES ARE SHOWN IN U.S. SURVEY FEET.  
BEARINGS ARE FOR TIE REFERENCE PURPOSES ONLY.

Statements of evidence relative to this corner are on the following page(s).

I hereby certify that this document and the data contained herein was prepared by me or under my direct supervision this \_\_\_\_\_ day of \_\_\_\_\_, 20\_\_\_\_.

SIGNATURE

Minnesota License No. \_\_\_\_\_

County Surveyor     Land Surveyor

OFFICE OF COUNTY SURVEYOR

County of Ramsey

I hereby certify that this document was filed in the County Surveyor's office on the \_\_\_\_ day of \_\_\_\_\_, 20\_\_\_\_.

David D. Claypool, P.L.S., County Surveyor

By \_\_\_\_\_, Deputy

## MONUMENT 122N

**Found a granite monument, down +/- 1 ft; placed a short cast iron monument on top and cemented in, May 15, 1974.**

**Retied monument, on north edge of road pavement, July 3, 1974.**

**Monument broke by road maintenance. Dug down to granite monument, July 23, 1996.**

**Set a short (10 in.) Harrison cast iron monument in cement over granite monument, July 25, 1996.**

**Retied monument, March 29, 2001.**

**Retied monument, June 15, 2006.**