

MONUMENT 10SC

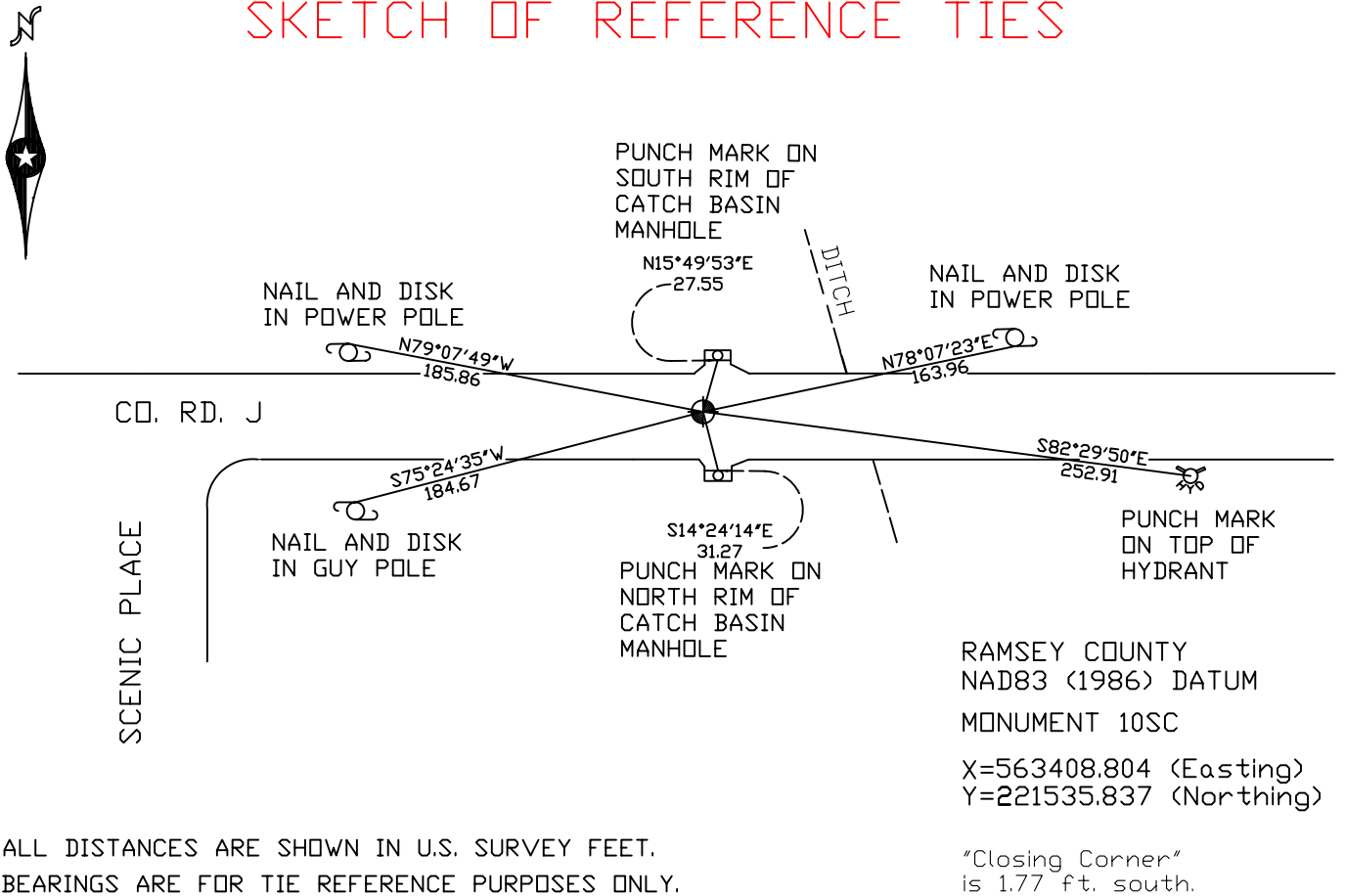
CERTIFICATE OF LOCATION OF GOVERNMENT CORNER

North Quarter Corner of Section 2, Township 30 North, Range 23 West,
County of Ramsey, State of Minnesota.

At the corner location shown on the sketch

- On November 21, 2006 found a cast iron monument, marked "3RD CORRECTION LINE", flush, (2638.46 ft. east of monument 9SC).
- left monument as found,
 lowered monument,
 removed monument (explain)
- On _____ placed a _____

SKETCH OF REFERENCE TIES



ALL DISTANCES ARE SHOWN IN U.S. SURVEY FEET.
BEARINGS ARE FOR TIE REFERENCE PURPOSES ONLY.

Statements of evidence relative to this corner are on the following page(s).

I hereby certify that this document and the data contained herein was prepared by me or under my direct supervision this _____ day of _____, 20____.

SIGNATURE

- Minnesota License No. _____
- Land Surveyor Professional Engineer
 County Surveyor County Engineer

OFFICE OF COUNTY SURVEYOR

County of Ramsey

I hereby certify that this document was filed in the County Surveyor's office on the ____ day of _____, 20____.

David D. Claypool, P.L.S., County Surveyor

By _____, Deputy

MONUMENT10SC

Found a granite monument, flush; retied, October 25, 1974.

Tied out granite monument for removal by construction, June 3, 1992.

Relocated position, August 30, 1993.

Retied position, September 1, 1993.

Set 20 in. cast iron monument, September 8, 1993.

Placed "Set 45" concrete around monument, October 10, 1993.

Set a 20 in. cast iron monument marked, "3RD CORRECTION LINE", 1.77 ft. north of original granite monument location, July 26, 1995.

Tied monument 10SC, December 14, 1998.

Retied monument, June 15, 2004.

Retied monument, November 21, 2006.