

MONUMENT 82

CERTIFICATE OF LOCATION OF GOVERNMENT CORNER

East Quarter Corner of Section 9, Township 30 North, Range 23 West,
County of Ramsey, State of Minnesota.

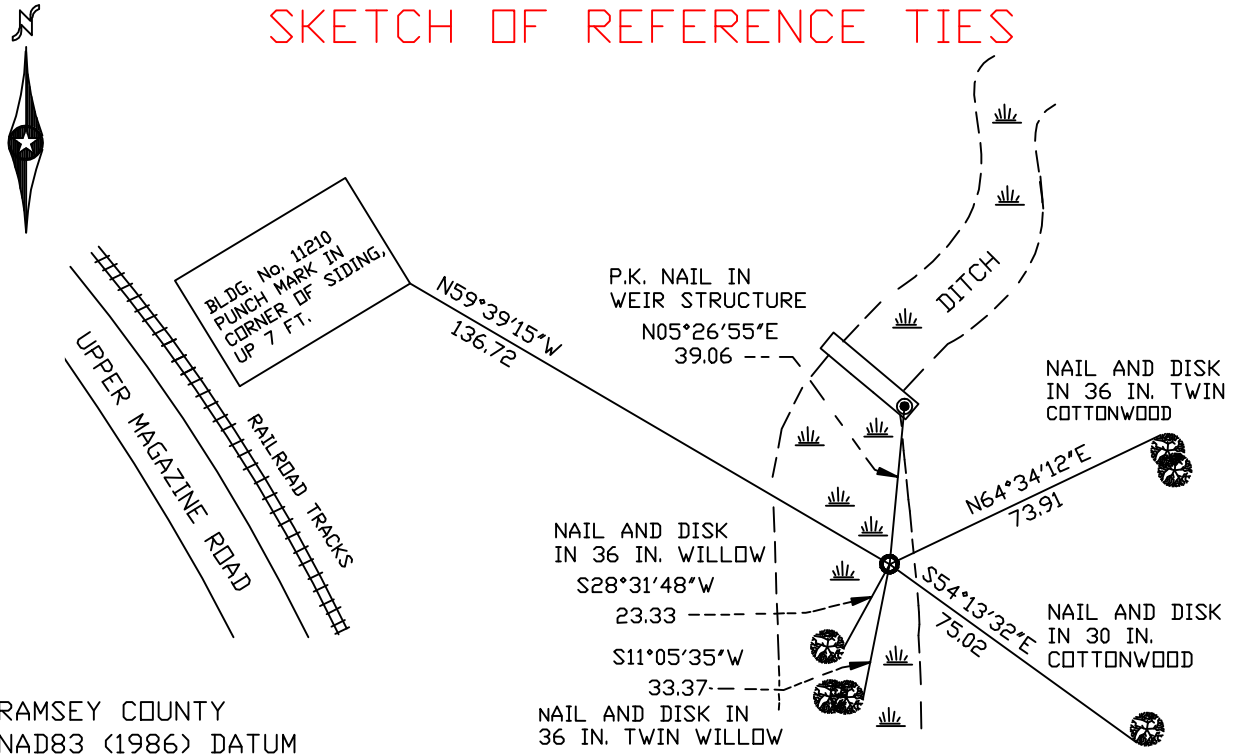
At the corner location shown on the sketch

On March 9, 2005 found a 4 in. pipe up +/- 3 ft.

left monument as found lowered monument removed monument (explain)

On _____ placed a _____

SKETCH OF REFERENCE TIES



RAMSEY COUNTY
NAD83 (1986) DATUM

MONUMENT 82

X= 555597.795 (Easting)
Y= 212979.118 (Northing)

ALL DISTANCES ARE SHOWN IN U.S. SURVEY FEET.
BEARINGS ARE FOR TIE REFERENCE PURPOSES ONLY.

Statements of evidence relative to this corner are on the following page(s).

I hereby certify that this document and the data contained herein was prepared by me or under my direct supervision this _____ day of _____, 20____.

SIGNATURE

Minnesota License No. _____

County Surveyor Land Surveyor

OFFICE OF COUNTY SURVEYOR

County of Ramsey

I hereby certify that this document was filed in the County Surveyor's office on the ____ day of _____, 20____.

David D. Claypool, P.L.S., County Surveyor

By _____, Deputy

MONUMENT 82

Found 4 in. iron pipe up +/- 3 ft. in concrete base, in ditch, tied pipe out, August 8, 1991.

Placed sign and post +/- 2 ft. east, August 26, 1991.

Retied monument (4 in. pipe leaning south), April 6, 2001.

Retied monument, March 9, 2005.