

MONUMENT 81

CERTIFICATE OF LOCATION OF GOVERNMENT CORNER

Center of Section 9, Township 30 North, Range 23 West, County of Ramsey,
State of Minnesota.

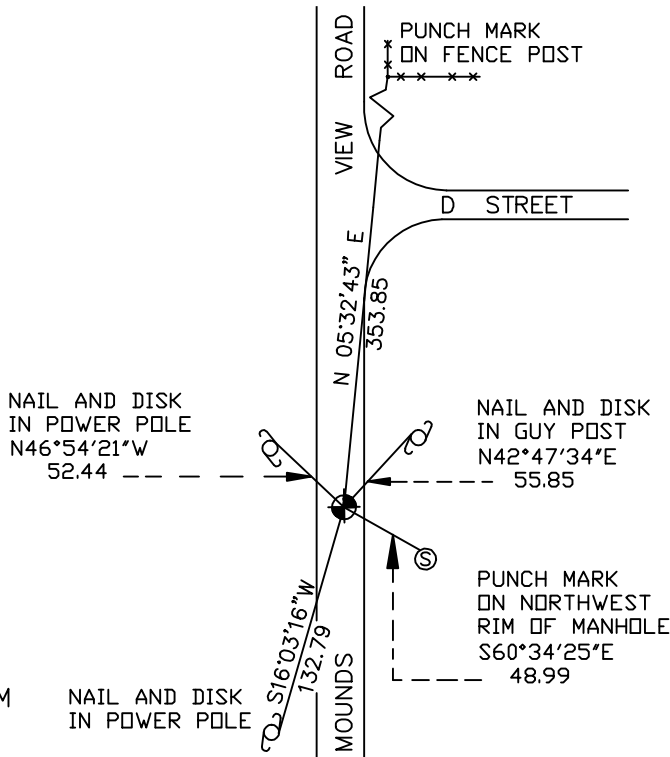
At the corner location shown on the sketch

On March 9, 2005 found a cast iron monument.

left monument as found lowered monument removed monument (explain)

On _____ placed a _____

SKETCH OF REFERENCE TIES



RAMSEY COUNTY
NAD83 (1986) DATUM
MONUMENT 81

NAIL AND DISK
IN POWER POLE

X= 552961.551 (Easting)
Y= 212979.786 (Northing)

ALL DISTANCES ARE SHOWN IN U.S. SURVEY FEET.
BEARINGS ARE FOR TIE REFERENCE PURPOSES ONLY.

Statements of evidence relative to this corner are on the following page(s).

I hereby certify that this document and the data
contained herein was prepared by me or under
my direct supervision this _____ day
of _____, 20____.

SIGNATURE

Minnesota License No. _____

County Surveyor Land Surveyor

OFFICE OF COUNTY SURVEYOR

County of Ramsey

I hereby certify that this document was filed in
the County Surveyor's office on the ____ day
of _____, 20____.

David D. Claypool, P.L.S., County Surveyor

By _____, Deputy

MONUMENT 81

Found a solid rod, $\frac{3}{4}$ in. by 24 in. long, flush and $\frac{3}{4}$ in. inside diameter pipe 18 in. long down 11 in. with a $\frac{3}{4}$ in. rod inside. Dug down 4 ft. and found nothing more. Soil is fine sand and is not stable. Placed 24 in. cast iron monument flush and tied out, August 22, 1991.

Retied monument, April 3, 2001.

Retied monument, March 9, 2005.