

# MONUMENT 78

## CERTIFICATE OF LOCATION OF GOVERNMENT CORNER

East Quarter Corner of Section 7, Township 30 North, Range 23 West,  
County of Ramsey, State of Minnesota.

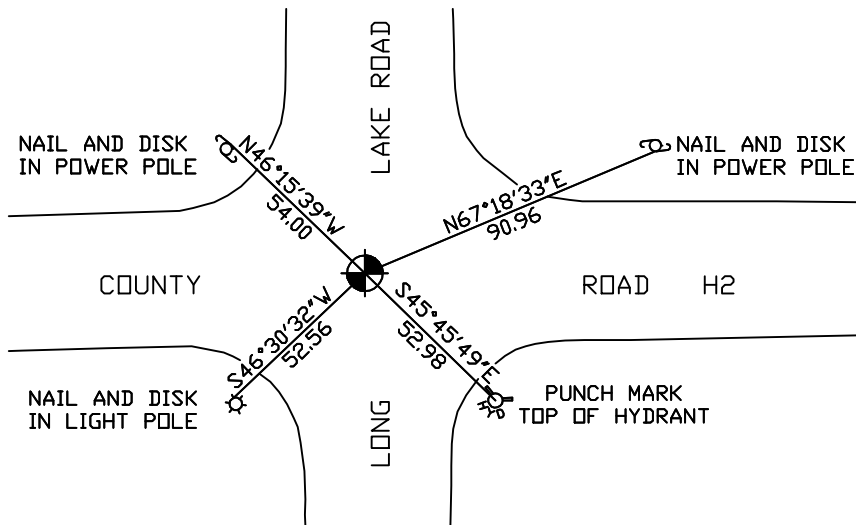
At the corner location shown on the sketch

On March 8, 2005 found a cast iron monument within a cast iron manhole assembly.

left monument as found     lowered monument     removed monument (explain)

On \_\_\_\_\_ placed a \_\_\_\_\_

## SKETCH OF REFERENCE TIES



RAMSEY COUNTY  
NAD83 (1986) DATUM

MONUMENT 78

X= 545055.034 (Easting)  
Y= 212962.440 (Northing)

ALL DISTANCES ARE SHOWN IN U.S. SURVEY FEET.  
BEARINGS ARE FOR TIE REFERENCE PURPOSES ONLY.

Statements of evidence relative to this corner are on the following page(s).

I hereby certify that this document and the data contained herein was prepared by me or under my direct supervision this \_\_\_\_\_ day of \_\_\_\_\_, 20\_\_\_\_.

SIGNATURE

Minnesota License No. \_\_\_\_\_

County Surveyor     Land Surveyor

OFFICE OF COUNTY SURVEYOR

County of Ramsey

I hereby certify that this document was filed in the County Surveyor's office on the \_\_\_\_ day of \_\_\_\_\_, 20\_\_\_\_.

David D. Claypool, P.L.S., County Surveyor

By \_\_\_\_\_, Deputy

## MONUMENT 78

**Found cast iron monument down 0.2 ft. and retied, August 19, 1974.**

**Monument was removed during construction, 1991.**

**Re-established monument position and placed a 20 in. cast iron monument, August 10, 1994.**

**Retied monument, December 2, 1994.**

**Retied monument, February 28, 1999.**

**Tied out monument for City of Mounds View reconstruction of County Road H2, August 12, 2002.**

**Relocated monument position and placed a 20 in. cast iron monument within a cast iron manhole assembly, May 23, 2003.**

**Retied monument, March 8, 2005.**