

MONUMENT 76

CERTIFICATE OF LOCATION OF GOVERNMENT CORNER

West Quarter Corner of Section 7, Township 30 North, Range 23 West,
County of Ramsey, State of Minnesota.

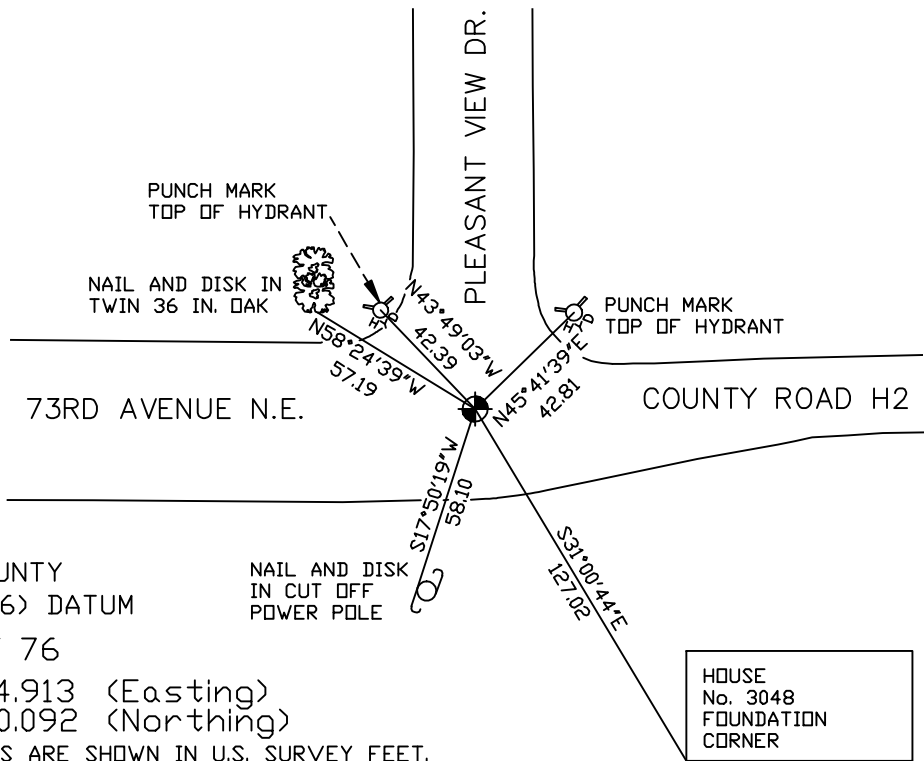
At the corner location shown on the sketch

On March 8, 2005 found a cast iron monument within a cast iron manhole
assembly.

left monument as found lowered monument removed monument (explain)

On _____ placed a _____

SKETCH OF REFERENCE TIES



RAMSEY COUNTY
NAD83 (1986) DATUM

MONUMENT 76

X= 540174.913 (Easting)
Y= 212820.092 (Northing)

ALL DISTANCES ARE SHOWN IN U.S. SURVEY FEET.
BEARINGS ARE FOR TIE REFERENCE PURPOSES ONLY.

Statements of evidence relative to this corner are on the following page(s).

I hereby certify that this document and the data
contained herein was prepared by me or under
my direct supervision this _____ day
of _____, 20____.

SIGNATURE

Minnesota License No. _____

County Surveyor Land Surveyor

OFFICE OF COUNTY SURVEYOR

County of Ramsey

I hereby certify that this document was filed in
the County Surveyor's office on the ____ day
of _____, 20____.

David D. Claypool, P.L.S., County Surveyor

By _____, Deputy

MONUMENT 76

Found broken off cast iron monument; replaced monument, August 14, 1975.

Retied monument, January 28, 1976.

Retied monument down +/- 0.1 ft., February 1, 1993.

Retied monument down +/- 0.15 ft., October 17, 2000.

Tied out monument for City of Mounds View reconstruction of County Road H2, August 12, 2002.

Relocated position and placed a 20 in. cast iron monument within a cast iron manhole assembly, April 30, 2003.

Retied monument, March 8, 2005.