

MONUMENT 76N

CERTIFICATE OF LOCATION OF GOVERNMENT CORNER

Special Meander Corner on the West Line of the Northwest Quarter of Section 7, Township 30 North, Range 23 West, County of Ramsey, State of Minnesota.

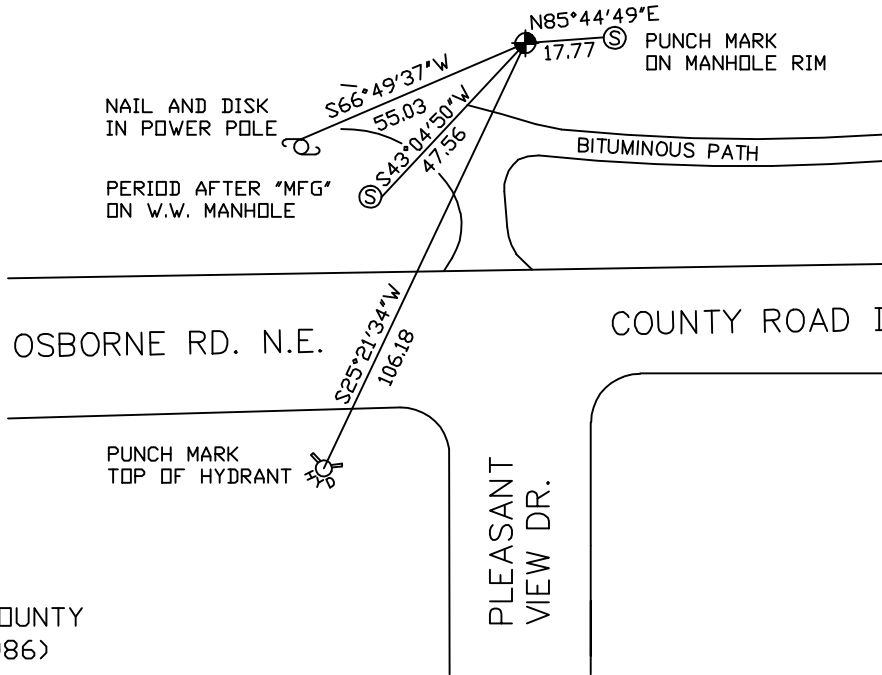
At the corner location shown on the sketch

On February 25, 2005 found a cast iron monument.

left monument as found lowered monument removed monument (explain)

On _____ placed a _____

SKETCH OF REFERENCE TIES



RAMSEY COUNTY

NAD83 (1986)

MONUMENT 76N

X= 540158.319 (Easting)
Y= 215297.788 (Northing)

ALL DISTANCES ARE SHOWN IN U.S. SURVEY FEET.
BEARINGS ARE FOR TIE REFERENCE PURPOSES ONLY.

Statements of evidence relative to this corner are on the following page(s).

I hereby certify that this document and the data contained herein was prepared by me or under my direct supervision this _____ day of _____, 20____.

SIGNATURE

Minnesota License No. _____

County Surveyor Land Surveyor

OFFICE OF COUNTY SURVEYOR

County of Ramsey

I hereby certify that this document was filed in the County Surveyor's office on the ____ day of _____, 20____.

David D. Claypool, P.L.S., County Surveyor

By _____, Deputy

MONUMENT 76N

Monument set on the shore of lake, June 23, 1903. (Special meander corner)

Found cast iron monument down +/- 0.5 ft. and retied, January 28, 1976.

Placed sign and post +/-1 ft. north of monument, October 15, 1985.

Retied monument, September 2, 1993.

Retied monument, October 17, 2000.

Retied monument, February 25, 2005.