

# MONUMENT 692

## CERTIFICATE OF LOCATION OF GOVERNMENT CORNER

North Quarter Corner of Section 13, Township 28 North, Range 22 West, County of Ramsey, State of Minnesota.

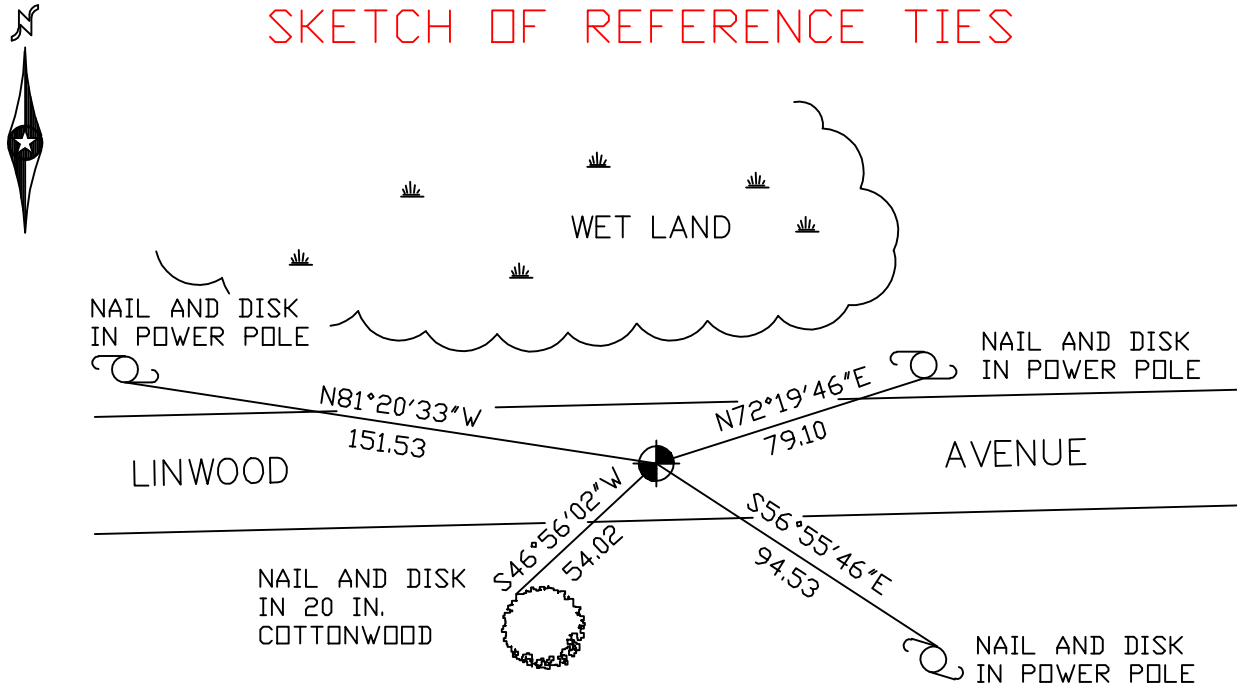
At the corner location shown on the sketch

On \_\_\_\_\_ found \_\_\_\_\_

left monument as found     lowered monument     removed monument (explain)

On September 14, 2005 placed a cast iron monument within a cast iron manhole assembly.

### SKETCH OF REFERENCE TIES



RAMSEY COUNTY

NAD83 (1986)

MONUMENT 692

X= 600695.085 (Easting)  
Y= 147086.341 (Northing)

ALL DISTANCES ARE SHOWN IN U.S. SURVEY FEET.  
BEARINGS ARE FOR TIE REFERENCE PURPOSES ONLY.

Statements of evidence relative to this corner are on the following page(s).

I hereby certify that this document and the data contained herein was prepared by me or under my direct supervision this \_\_\_\_\_ day of \_\_\_\_\_, 20\_\_\_\_.

SIGNATURE

Minnesota License No. \_\_\_\_\_

County Surveyor     Land Surveyor

OFFICE OF COUNTY SURVEYOR

County of Ramsey

I hereby certify that this document was filed in the County Surveyor's office on the \_\_\_\_ day of \_\_\_\_\_, 20\_\_\_\_.

David D. Claypool, P.L.S., County Surveyor

By \_\_\_\_\_, Deputy

## MONUMENT 692

**Found a granite monument down +/- 0.4 ft.; set a short cast iron monument over granite monument and retied, February 18, 1976.**

**Short cast iron monument gone. Granite monument down +/- 4 1/2 in., November 15, 1990.**

**Tied monument, May 8, 1996. Maintenance Department to remove granite monument.**

**Maintenance Department set a cast iron manhole assembly in place, with a 6 in. thick concrete cylinder. Found that water seeps into manhole; tried boring a 4 in. shaft and filled with sand. Water problem persists, August, 1997.**

**Filled manhole with sand and set a 20 in. cast iron monument, 1998.**

**Retied cast iron monument, down +/- 3 in., within a cast iron manhole assembly, April 18, 2001.**

**Monument lost during housing development project. Monument replaced by using traverse notes and monument ties of record. Cast iron manhole assembly placed around monument and retied, September 14, 2005.**