

# MONUMENT 42

## CERTIFICATE OF LOCATION OF GOVERNMENT CORNER

West Quarter Corner of Section 4, Township 30 North, Range 22 West,  
County of Ramsey, State of Minnesota.

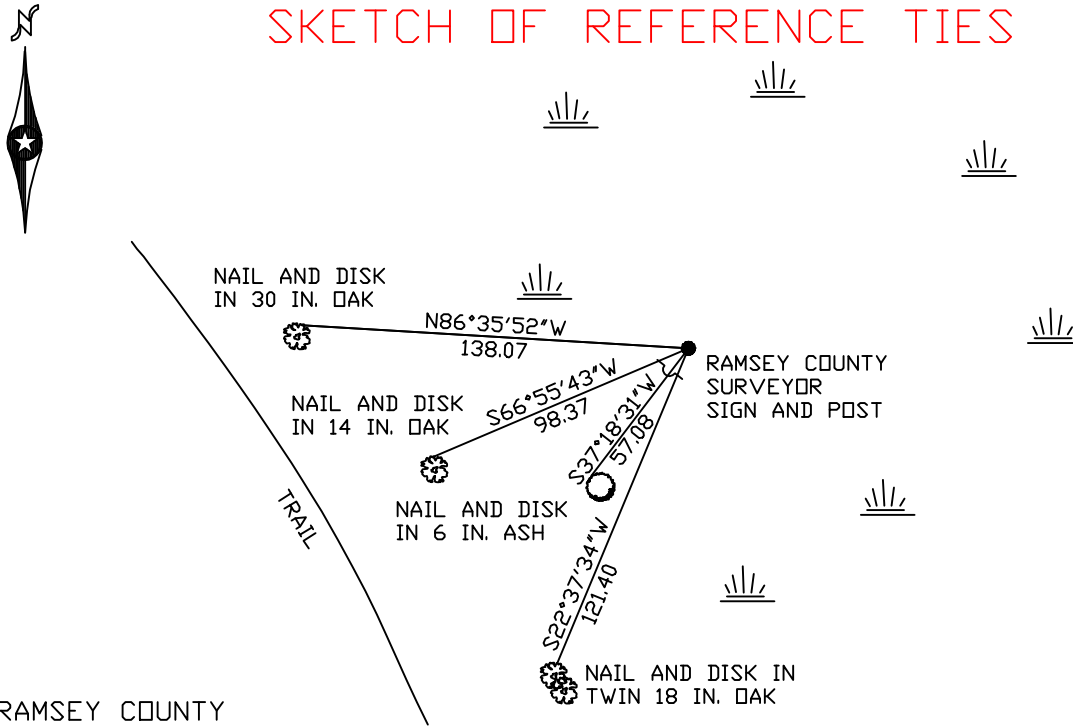
At the corner location shown on the sketch

On February 22, 2005 found an iron pipe monument.

left monument as found     lowered monument     removed monument (explain)

On \_\_\_\_\_ placed a \_\_\_\_\_

## SKETCH OF REFERENCE TIES



RAMSEY COUNTY  
NAD83 (1986) DATUM

MONUMENT 42

X= 581796.291 (Easting)  
Y= 218385.026 (Northing)

ALL DISTANCES ARE SHOWN IN U.S. SURVEY FEET.  
BEARINGS ARE FOR TIE REFERENCE PURPOSES ONLY.

Statements of evidence relative to this corner are on the following page(s).

I hereby certify that this document and the data contained herein was prepared by me or under my direct supervision this \_\_\_\_\_ day of \_\_\_\_\_, 20\_\_\_\_.

SIGNATURE

Minnesota License No. \_\_\_\_\_

County Surveyor     Land Surveyor

OFFICE OF COUNTY SURVEYOR

County of Ramsey

I hereby certify that this document was filed in the County Surveyor's office on the \_\_\_\_ day of \_\_\_\_\_, 20\_\_\_\_.

David D. Claypool, P.L.S., County Surveyor

By \_\_\_\_\_, Deputy

## MONUMENT 42

**Found iron in concrete and pipe, placed by Milner W. Carley and Associates, April, 1989.**

**Placed sign and post adjacent to monument. Monument up 10 in. and leaning southwest, April 26, 1991.**

**Retied monument, February 22, 2005.**