

MONUMENT 352

CERTIFICATE OF LOCATION OF GOVERNMENT CORNER

The North Quarter Corner of Section 9, Township 29 North, Range 23 West,
County of Ramsey, State of Minnesota.

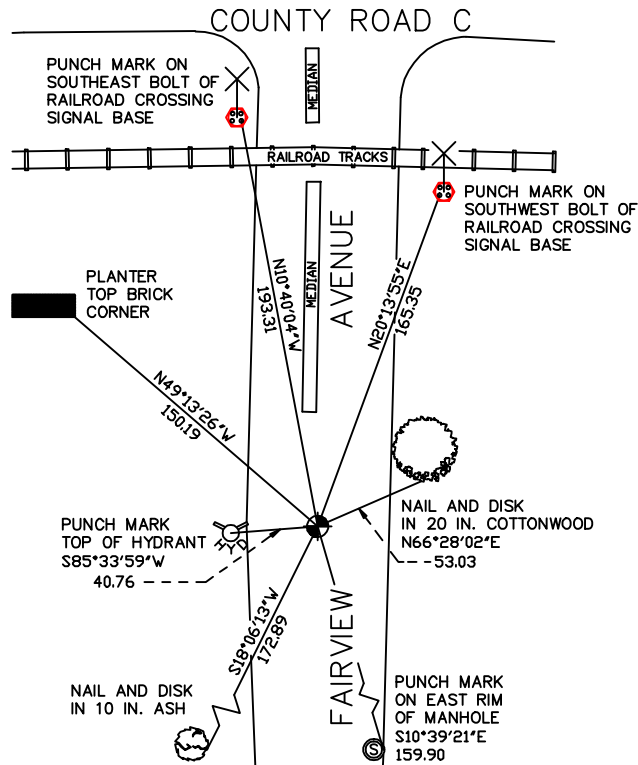
At the corner location shown on the sketch

On _____ found _____

left monument as found lowered monument removed monument (explain)

On September 30, 2005 placed a 20 in. cast iron monument within a cast iron manhole assembly.

SKETCH OF REFERENCE TIES



RAMSEY COUNTY
NAD83 (1986)
MONUMENT 352

X= 553324.936 (Easting)
Y= 183741.536 (Northing)

ALL DISTANCES ARE SHOWN IN U.S. SURVEY FEET.
BEARINGS ARE FOR TIE REFERENCE PURPOSES ONLY.

Statements of evidence relative to this corner are on the following page(s).

I hereby certify that this document and the data contained herein was prepared by me or under my direct supervision this _____ day of _____, 20____.

SIGNATURE

Minnesota License No. _____

County Surveyor Land Surveyor

OFFICE OF COUNTY SURVEYOR

County of Ramsey

I hereby certify that this document was filed in the County Surveyor's office on the ____ day of _____, 20____.

David D. Claypool, P.L.S., County Surveyor

By _____, Deputy

MONUMENT 352

Found a granite monument down 0.25 ft. and tied out, July 24, 1974.

Granite monument removed during road construction. Replaced with a cast iron monument, May 8, 1975.

Retied monument, 1981.

Checked ties, January 16, 1991.

Retied monument, September 13, 2000.

Monument tied out prior to removal for road construction. Replaced with a 20 in. cast iron monument and tied out, September 30, 2005.