

MONUMENT 351

CERTIFICATE OF LOCATION OF GOVERNMENT CORNER

Northeast Corner of Section 8, Township 29 North, Range 23 West, County of Ramsey, State of Minnesota.

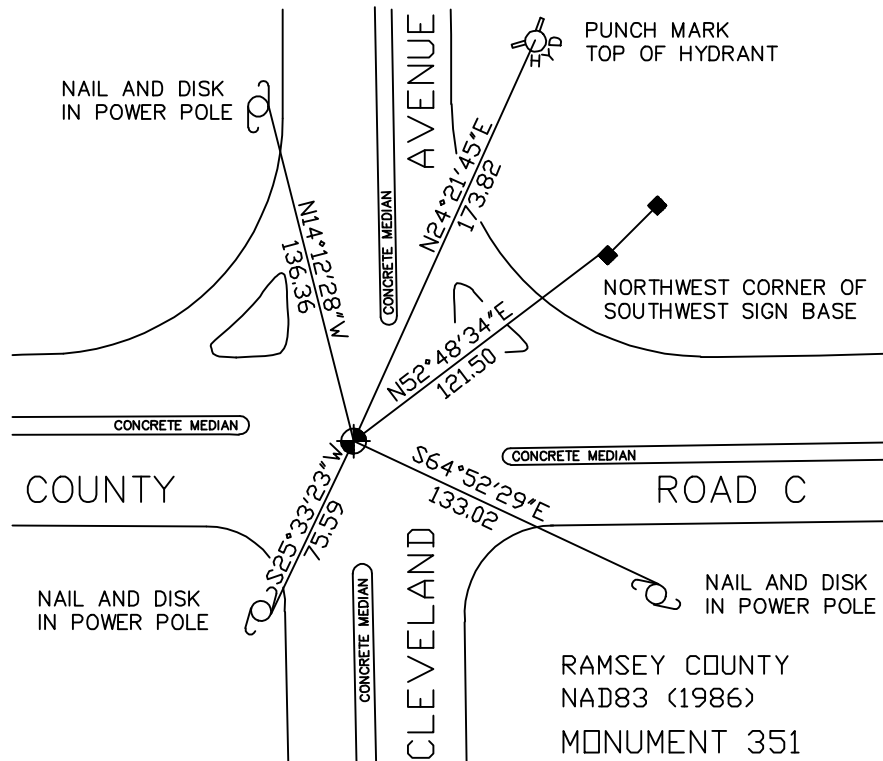
At the corner location shown on the sketch

On October 11, 2005 found a cast iron monument within a cast iron manhole assembly.

left monument as found lowered monument removed monument (explain)

On _____ placed a _____

SKETCH OF REFERENCE TIES



ALL DISTANCES ARE SHOWN IN U.S. SURVEY FEET.
BEARINGS ARE FOR TIE REFERENCE PURPOSES ONLY.

RAMSEY COUNTY
NAD83 (1986)
MONUMENT 351
X= 550694.545 (Easting)
Y= 183714.453 (Northing)

Statements of evidence relative to this corner are on the following page(s).

I hereby certify that this document and the data contained herein was prepared by me or under my direct supervision this _____ day of _____, 20____.

SIGNATURE

Minnesota License No. _____

County Surveyor Land Surveyor

OFFICE OF COUNTY SURVEYOR

County of Ramsey

I hereby certify that this document was filed in the County Surveyor's office on the ____ day of _____, 20____.

David D. Claypool, P.L.S., County Surveyor

By _____, Deputy

MONUMENT 351

Found a cast iron monument flush, 1975.

Retied monument, August 22, 2002.

Monument tied out and removed for road construction, June 3, 2005.

Cast iron monument reset within a cast iron manhole assembly, October 3, 2005.

Tied out monument, October 11, 2005.