

MONUMENT 316

CERTIFICATE OF LOCATION OF GOVERNMENT CORNER

South Quarter Corner of Section 32, Township 30 North, Range 22 West,
County of Ramsey, State of Minnesota.

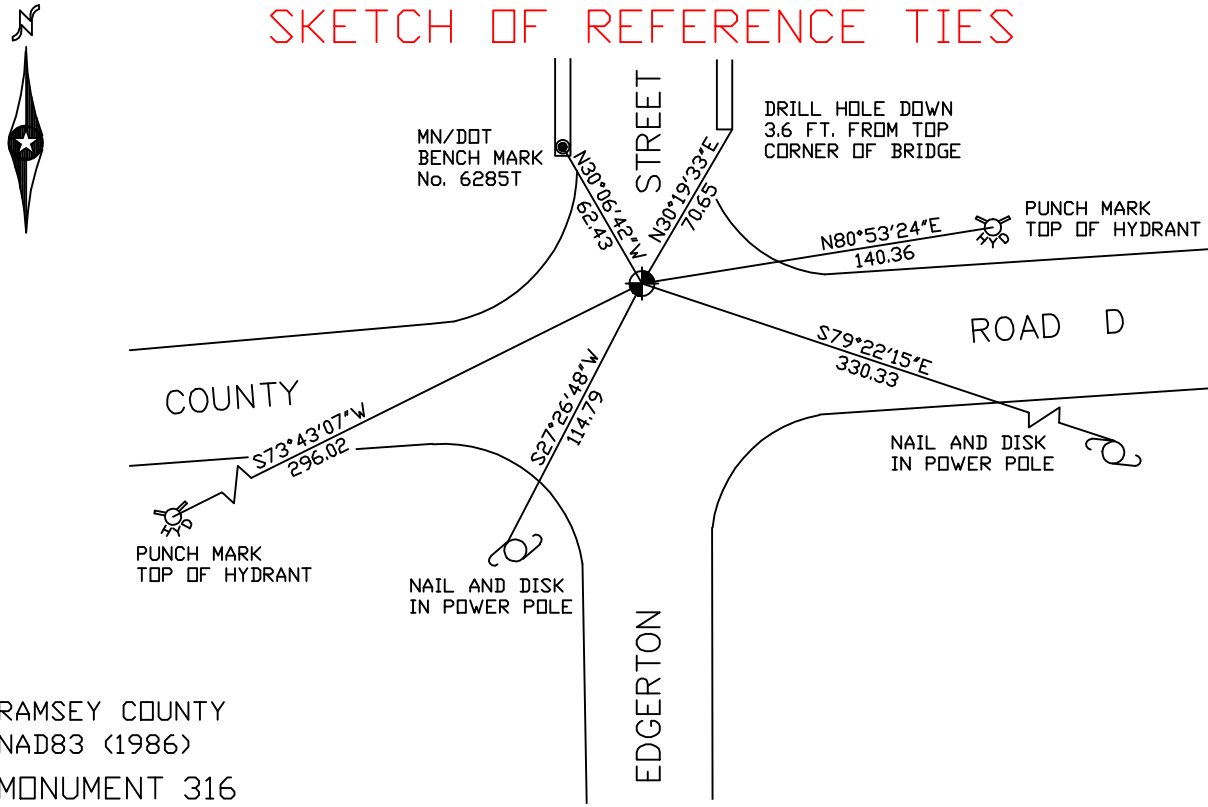
At the corner location shown on the sketch

On July 28, 2005 found a cast iron monument within a cast iron manhole
assembly.

left monument as found lowered monument removed monument (explain)

On _____ placed a _____

SKETCH OF REFERENCE TIES



RAMSEY COUNTY
NAD83 (1986)
MONUMENT 316

X= 579282.252 (Easting)
Y= 189402.202 (Northing)

ALL DISTANCES ARE SHOWN IN U.S. SURVEY FEET.
BEARINGS ARE FOR TIE REFERENCE PURPOSES ONLY.

Statements of evidence relative to this corner are on the following page(s).

I hereby certify that this document and the data contained herein was prepared by me or under my direct supervision this _____ day of _____, 20____.

SIGNATURE

Minnesota License No. _____

County Surveyor Land Surveyor

OFFICE OF COUNTY SURVEYOR

County of Ramsey

I hereby certify that this document was filed in the County Surveyor's office on the ____ day of _____, 20____.

David D. Claypool, P.L.S., County Surveyor

By _____, Deputy

MONUMENT 316

Found cast iron monument flush, retied, 1976.

Retied monument, August 31, 1990.

Retied monument, December 3, 1998.

Monument tied out for construction of bridge, September 9, 2003.

Monument reset within a cast iron manhole assembly, July 13, 2005.

Retied monument, July 28, 2005.