

# MONUMENT 284

## CERTIFICATE OF LOCATION OF GOVERNMENT CORNER

West Quarter Corner of Section 35, Township 30 North, Range 23 West,  
County of Ramsey, State of Minnesota.

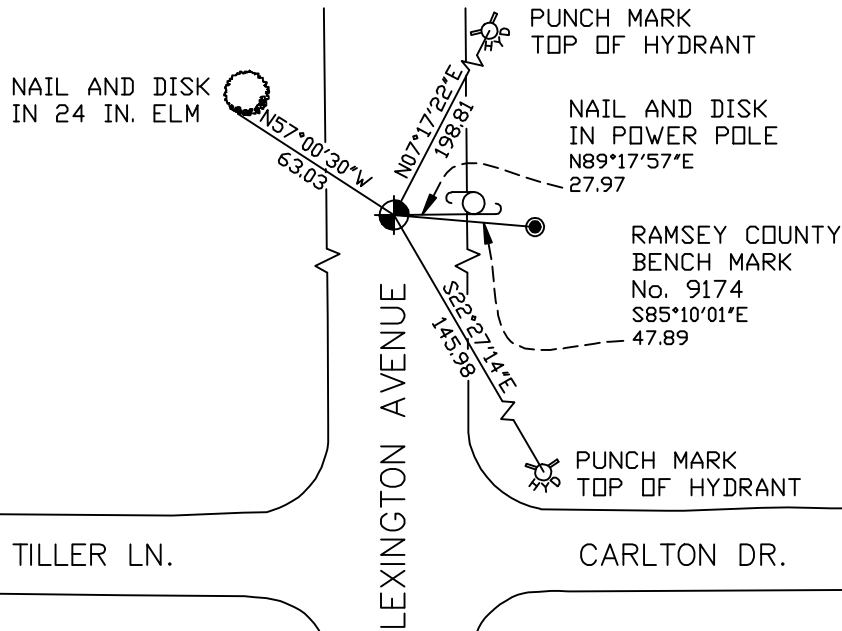
At the corner location shown on the sketch

On October 25, 2005 found a cast iron monument within a cast iron manhole assembly.

left monument as found     lowered monument     removed monument (explain)

On \_\_\_\_\_ placed a \_\_\_\_\_

### SKETCH OF REFERENCE TIES



RAMSEY COUNTY  
NAD83 (1986)  
MONUMENT 284

X= 561089.343 (Easting)  
Y= 191928.638 (Northing)

ALL DISTANCES ARE SHOWN IN U.S. SURVEY FEET.  
BEARINGS ARE FOR TIE REFERENCE PURPOSES ONLY.

Statements of evidence relative to this corner are on the following page(s).

I hereby certify that this document and the data contained herein was prepared by me or under my direct supervision this \_\_\_\_\_ day of \_\_\_\_\_, 20\_\_\_\_.

SIGNATURE

Minnesota License No. \_\_\_\_\_

County Surveyor     Land Surveyor

OFFICE OF COUNTY SURVEYOR

County of Ramsey

I hereby certify that this document was filed in the County Surveyor's office on the \_\_\_\_ day of \_\_\_\_\_, 20\_\_\_\_.

David D. Claypool, P.L.S., County Surveyor

By \_\_\_\_\_, Deputy

## MONUMENT 284

**Found granite monument down 4<sup>3</sup>/<sub>4</sub> in., set short cast iron monument, July 15, 1975.**

**Road construction destroyed monument; set 20 in. cast iron monument, September, 1980.**

**Retied monument, June, 1990.**

**Tied out monument and set 20 in. cast iron monument 1.5 ft. below finished grade, April 17 and 28, 1998.**

**Set a cast iron manhole assembly over monument, May 27, 1998.**

**Retied monument, October 25, 2005.**