

MONUMENT 279

CERTIFICATE OF LOCATION OF GOVERNMENT CORNER

Center of Section 32, Township 30 North, Range 23 West, County of Ramsey,
State of Minnesota.

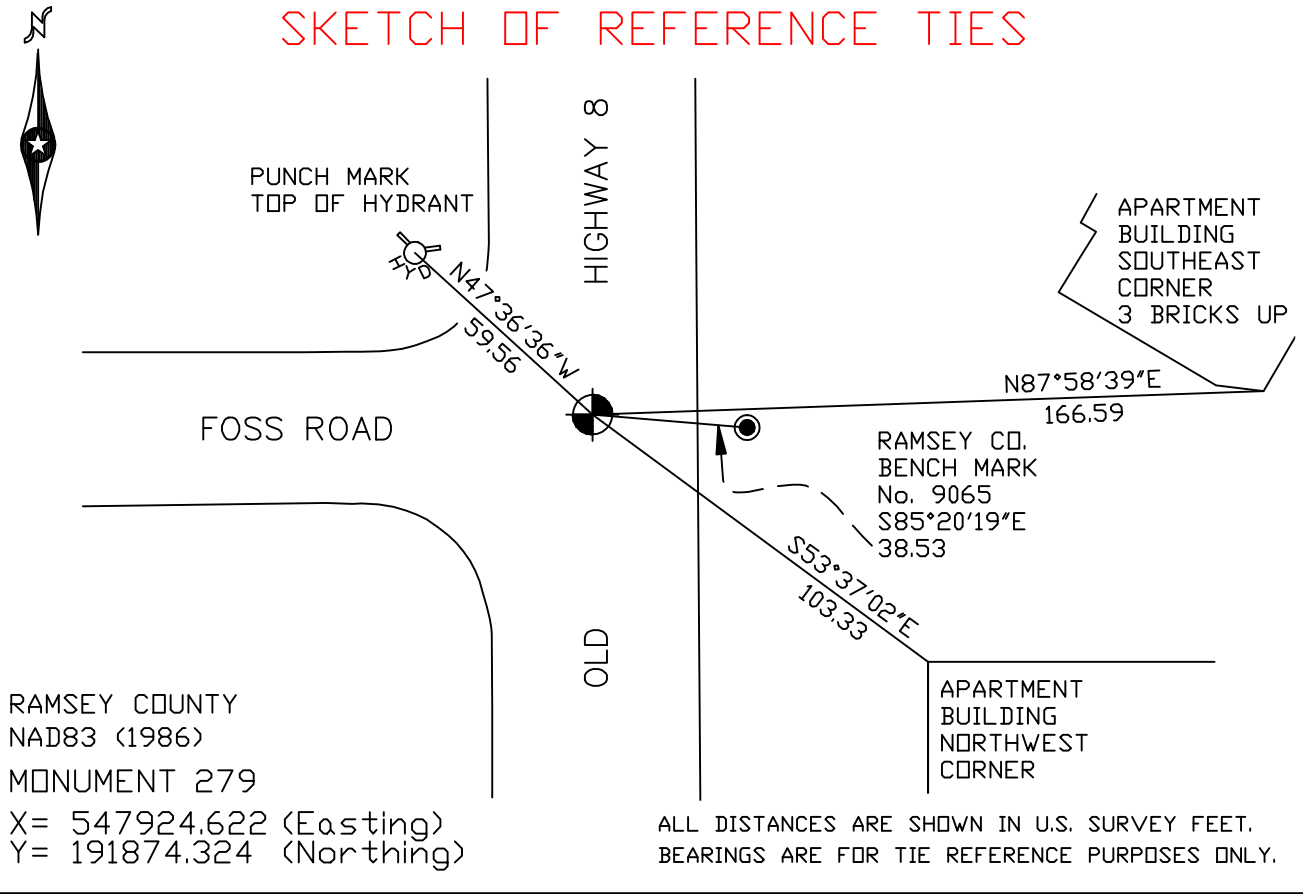
At the corner location shown on the sketch

On October 24, 2005 found a cast iron monument within a cast iron manhole
assembly.

left monument as found lowered monument removed monument (explain)

On _____ placed a _____

SKETCH OF REFERENCE TIES



RAMSEY COUNTY
NAD83 (1986)
MONUMENT 279

X= 547924.622 (Easting)
Y= 191874.324 (Northing)

Statements of evidence relative to this corner are on the following page(s).

I hereby certify that this document and the data
contained herein was prepared by me or under
my direct supervision this _____ day
of _____, 20____.

SIGNATURE

Minnesota License No. _____

County Surveyor Land Surveyor

OFFICE OF COUNTY SURVEYOR

County of Ramsey

I hereby certify that this document was filed in
the County Surveyor's office on the ____ day
of _____, 20____.

David D. Claypool, P.L.S., County Surveyor

By _____, Deputy

MONUMENT 279

**Found iron in concrete; dug down +/- 3.5 ft. and found nothing,
September 7, 1976.**

Set cast iron monument, 1981.

Retied monument, January 31, 1991.

Retied monument, October 27, 1999.

**Monument lowered and placed within a cast iron manhole assembly,
July 27, 2005.**

Retied monument, October 24, 2005.