

MONUMENT 278

CERTIFICATE OF LOCATION OF GOVERNMENT CORNER

East Quarter Corner of Section 31, Township 30 North, Range 23 West, County of Ramsey, State of Minnesota.

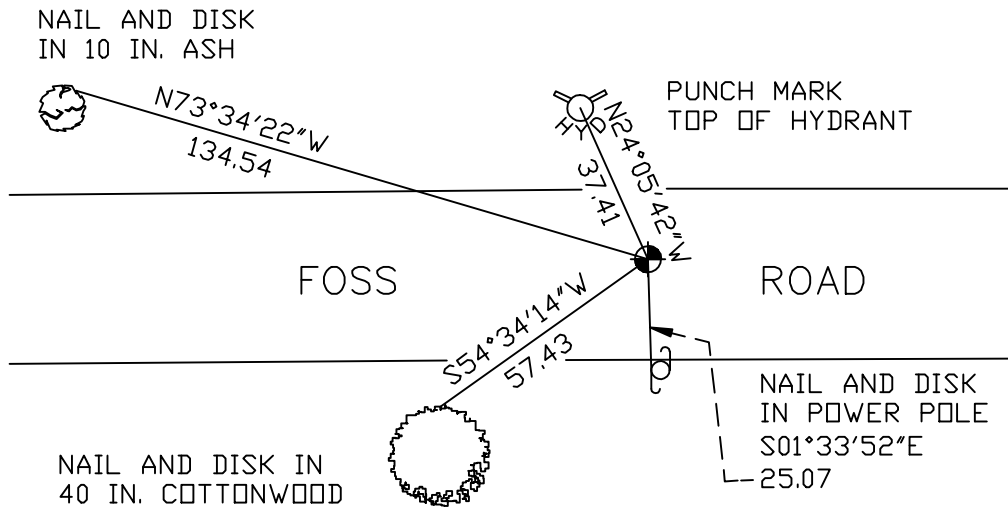
At the corner location shown on the sketch

On October 24, 2005 found a cast iron monument.

left monument as found lowered monument removed monument (explain)

On _____ placed a _____

SKETCH OF REFERENCE TIES



RAMSEY COUNTY

NAD83 (1986)

MONUMENT 278

X= 545292.299 (Easting)
Y= 191874.757 (Northing)

ALL DISTANCES ARE SHOWN IN U.S. SURVEY FEET.
BEARINGS ARE FOR TIE REFERENCE PURPOSES ONLY.

Statements of evidence relative to this corner are on the following page(s).

I hereby certify that this document and the data contained herein was prepared by me or under my direct supervision this _____ day of _____, 20____.

SIGNATURE

Minnesota License No. _____

County Surveyor Land Surveyor

OFFICE OF COUNTY SURVEYOR

County of Ramsey

I hereby certify that this document was filed in the County Surveyor's office on the ____ day of _____, 20____.

David D. Claypool, P.L.S., County Surveyor

By _____, Deputy

MONUMENT 278

Found nothing, ties gone. Placed a cast iron monument, May 6, 1976.

Retied monument, 1989.

Monument destroyed by City of New Brighton street construction. Set a 20 in. cast iron monument flush in concrete and retied, October 29, 1999.

Retied monument, October 24, 2005.