

# MONUMENT 268

## CERTIFICATE OF LOCATION OF GOVERNMENT CORNER

South Quarter Corner of Section 28, Township 30 North, Range 22 West,  
County of Ramsey, State of Minnesota.

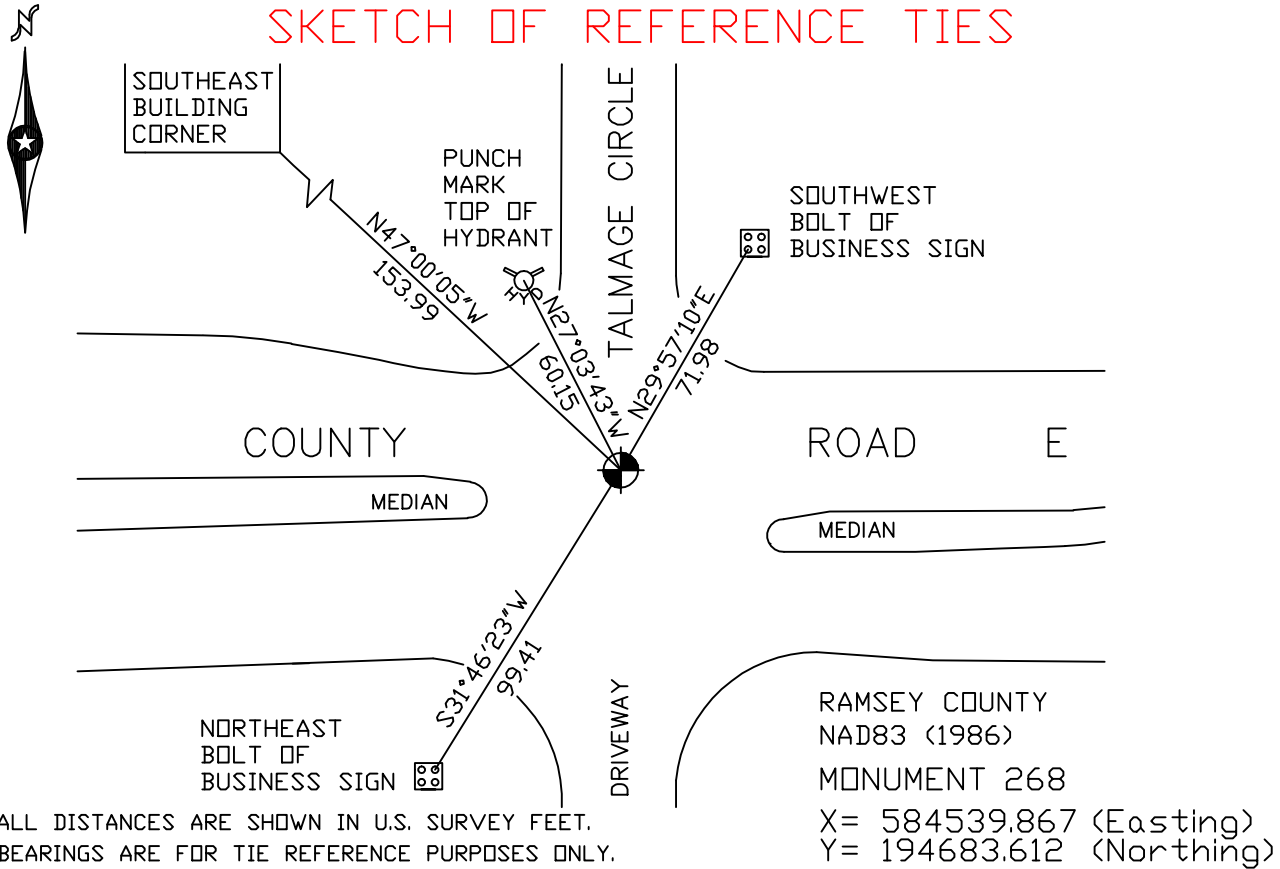
At the corner location shown on the sketch

On October 27, 2005 found a cast iron monument.

left monument as found     lowered monument     removed monument (explain)

On \_\_\_\_\_ placed a \_\_\_\_\_

### SKETCH OF REFERENCE TIES



Statements of evidence relative to this corner are on the following page(s).

I hereby certify that this document and the data contained herein was prepared by me or under my direct supervision this \_\_\_\_\_ day of \_\_\_\_\_, 20\_\_\_\_.

SIGNATURE

Minnesota License No. \_\_\_\_\_

County Surveyor     Land Surveyor

OFFICE OF COUNTY SURVEYOR

County of Ramsey

I hereby certify that this document was filed in the County Surveyor's office on the \_\_\_\_ day of \_\_\_\_\_, 20\_\_\_\_.

David D. Claypool, P.L.S., County Surveyor

By \_\_\_\_\_, Deputy

## MONUMENT 268

**Found cast iron monument flush and retied, April, 1974.**

**Replaced 20 in. cast iron monument after road reconstruction, 1977.**

**Retied monument, January 9, 1992.**

**Set 20 in. cast iron monument, September, 1994.**

**Retied monument, December 8, 1998.**

**Retied monument, October 27, 2005.**