

MONUMENT 262

CERTIFICATE OF LOCATION OF GOVERNMENT CORNER

North Quarter Corner of Section 36, Township 30 North, Range 23 West,
County of Ramsey, State of Minnesota.

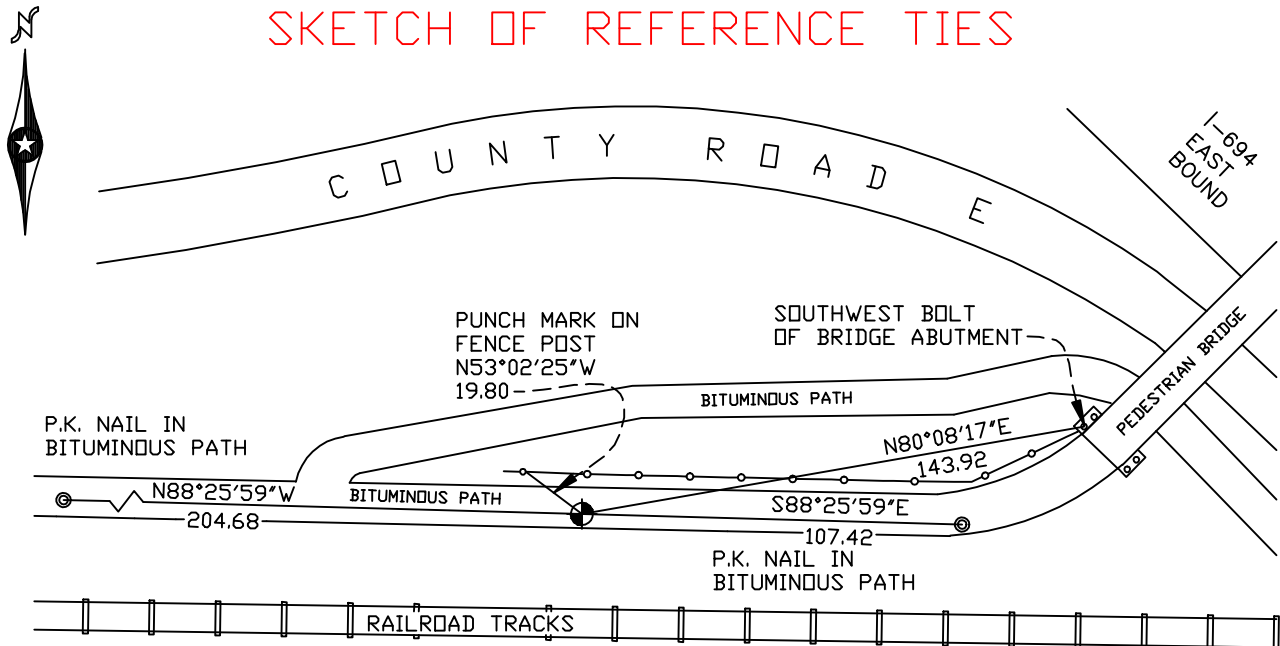
At the corner location shown on the sketch

On October 24, 2005 found a cast iron monument.

left monument as found lowered monument removed monument (explain)

On _____ placed a _____

SKETCH OF REFERENCE TIES



RAMSEY COUNTY

NAD83 (1986)

MONUMENT 262

X= 568972.556 (Easting)
Y= 194622.328 (Northing)

ALL DISTANCES ARE SHOWN IN U.S. SURVEY FEET.
BEARINGS ARE FOR TIE REFERENCE PURPOSES ONLY.

Statements of evidence relative to this corner are on the following page(s).

I hereby certify that this document and the data contained herein was prepared by me or under my direct supervision this _____ day of _____, 20____.

SIGNATURE

Minnesota License No. _____

County Surveyor Land Surveyor

OFFICE OF COUNTY SURVEYOR

County of Ramsey

I hereby certify that this document was filed in the County Surveyor's office on the ____ day of _____, 20____.

David D. Claypool, P.L.S., County Surveyor

By _____, Deputy

MONUMENT 262

Found cast iron monument flush and retied, July 30, 1974.

Placed sign and post +/-2 ft. southwest of cast iron monument and retied, June 27, 1991.

Removed cast iron monument for City of Shoreview path construction, June 2, 1997.

Reset 20 in. cast iron monument, cemented, placed sign and post 4.5 ft. south and tied, June 25, 1998.

Retied monument, October 24, 2005.