

MONUMENT 260

CERTIFICATE OF LOCATION OF GOVERNMENT CORNER

North Quarter Corner of Section 35, Township 30 North, Range 23 West, County of Ramsey, State of Minnesota.

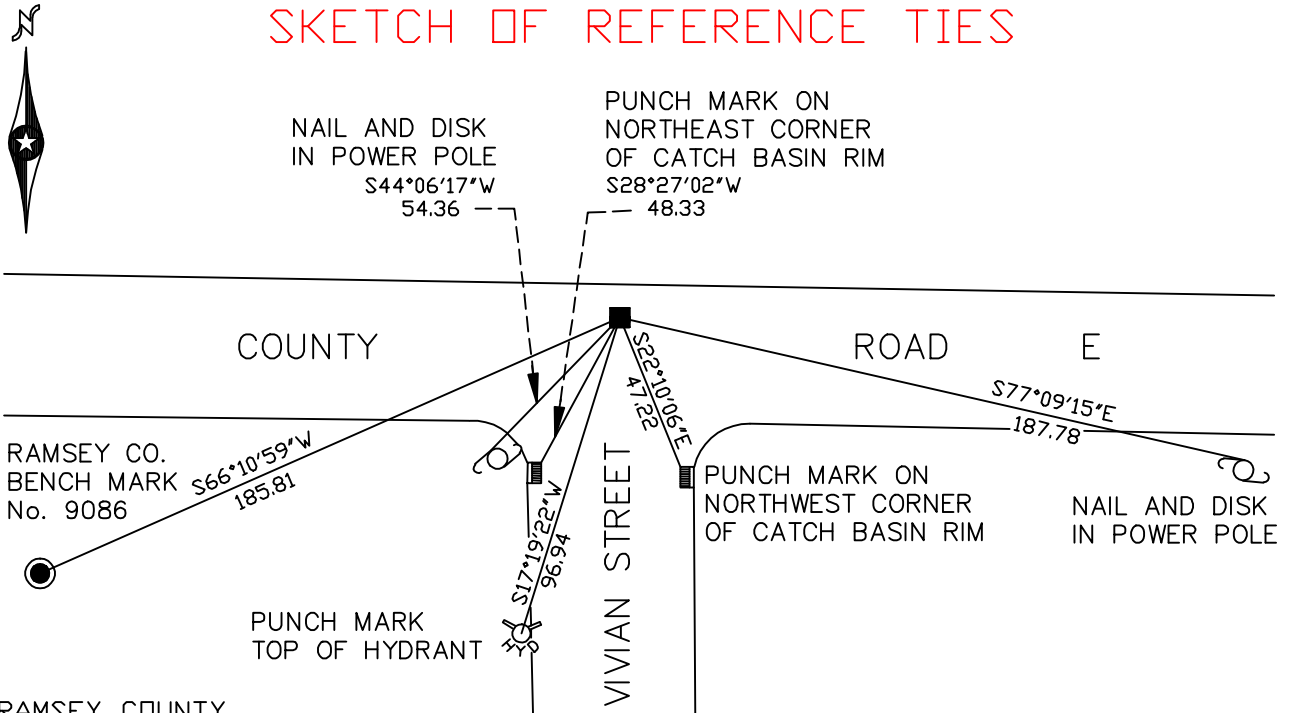
At the corner location shown on the sketch

On October 25, 2005 found a granite monument within a cast iron manhole assembly.

left monument as found lowered monument removed monument (explain)

On _____ placed a _____

SKETCH OF REFERENCE TIES



RAMSEY COUNTY
NAD83 (1986)

MONUMENT 260

X= 563703.615 (Easting)
Y= 194587.901 (Northing)

ALL DISTANCES ARE SHOWN IN U.S. SURVEY FEET.
BEARINGS ARE FOR TIE REFERENCE PURPOSES ONLY.

Statements of evidence relative to this corner are on the following page(s).

I hereby certify that this document and the data contained herein was prepared by me or under my direct supervision this _____ day of _____, 20____.

SIGNATURE

Minnesota License No. _____

County Surveyor Land Surveyor

OFFICE OF COUNTY SURVEYOR

County of Ramsey

I hereby certify that this document was filed in the County Surveyor's office on the ____ day of _____, 20____.

David D. Claypool, P.L.S., County Surveyor

By _____, Deputy

MONUMENT 260

Position established and placed a granite monument, March, 1942.

Found a solid iron at monument location. Dug and found granite monument down 0.91 ft., June 25, 1975.

Set a cast iron monument over granite monument, May 26, 1976.

Cast iron monument down +/- 0.35 ft. and tied, June 4, 1990.

Tied monument, July 8, 1998.

Removed old cast iron monument; granite monument down 11.5 in., July 14, 1998.

Set a cast iron manhole assembly over the granite monument, August 10, 1999.

Retied monument, October 25, 2005.