

# MONUMENT 259

## CERTIFICATE OF LOCATION OF GOVERNMENT CORNER

Northeast Corner of Section 34, Township 30 North, Range 23 West, County of Ramsey, State of Minnesota.

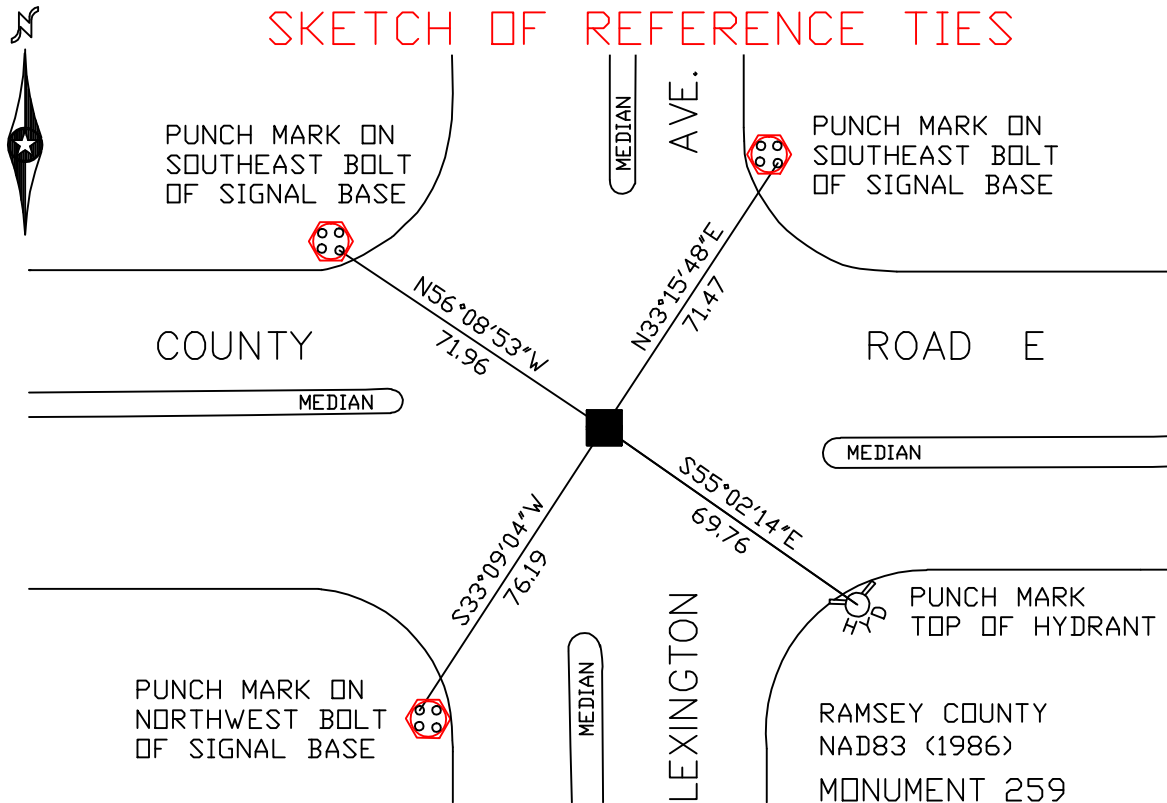
At the corner location shown on the sketch

On October 25, 2005 found a granite monument within a cast iron manhole assembly.

left monument as found     lowered monument     removed monument (explain)

On \_\_\_\_\_ placed a \_\_\_\_\_

### SKETCH OF REFERENCE TIES



ALL DISTANCES ARE SHOWN IN U.S. SURVEY FEET.  
BEARINGS ARE FOR TIE REFERENCE PURPOSES ONLY.

X = 561067.265 (Easting)  
Y = 194564.214 (Northing)

Statements of evidence relative to this corner are on the following page(s).

I hereby certify that this document and the data contained herein was prepared by me or under my direct supervision this \_\_\_\_\_ day of \_\_\_\_\_, 20\_\_\_\_.

SIGNATURE

Minnesota License No. \_\_\_\_\_

County Surveyor     Land Surveyor

OFFICE OF COUNTY SURVEYOR

County of Ramsey

I hereby certify that this document was filed in the County Surveyor's office on the \_\_\_\_ day of \_\_\_\_\_, 20\_\_\_\_.

David D. Claypool, P.L.S., County Surveyor

By \_\_\_\_\_, Deputy

## MONUMENT 259

**Found granite monument down 0.79 ft.; set cast iron monument over granite, May 25, 1976.**

**Monument destroyed during road construction; cast iron monument set, no date given in field book.**

**Retied monument, February 29, 1984.**

**Monument removed for road milling project, July, 1987.**

**Granite monument found down +/-0.75 ft., short cast iron monument placed over granite, no date given in field book.**

**Retied monument, December 1, 1998.**

**Tied monument for construction, April 26, 2000.**

**Removed short cast iron monument; granite down +/-0.7 ft., April 28, 2000.**

**Placed a cast iron manhole assembly over monument, October, 2000.**

**Retied monument, October 25, 2005.**