

MONUMENT 252

CERTIFICATE OF LOCATION OF GOVERNMENT CORNER

South Quarter Corner of Section 30, Township 30 North, Range 23 West,
County of Ramsey, State of Minnesota.

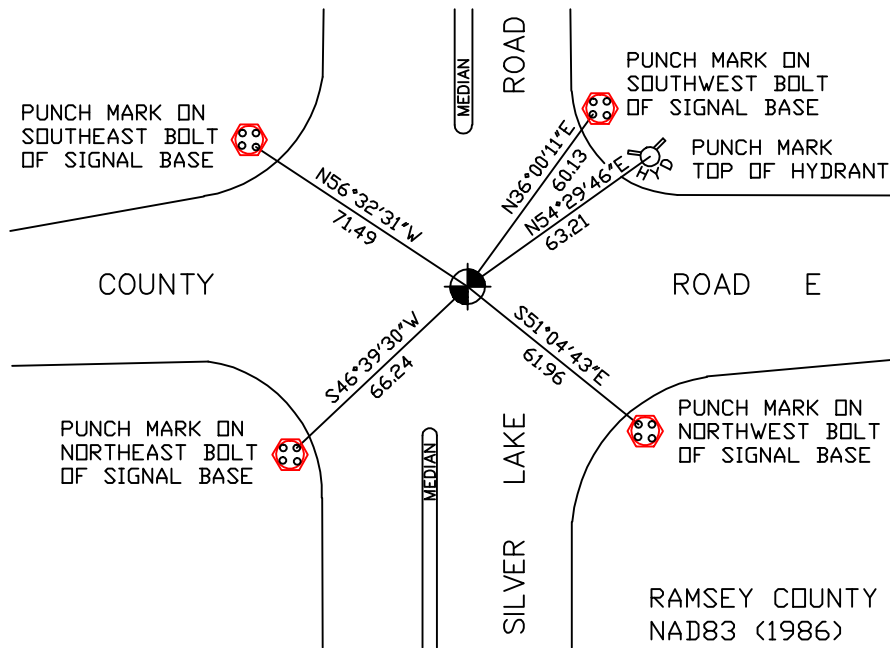
At the corner location shown on the sketch

On October 24, 2005 found a cast iron monument within a cast iron manhole assembly.

left monument as found lowered monument removed monument (explain)

On _____ placed a _____

SKETCH OF REFERENCE TIES



RAMSEY COUNTY
NAD83 (1986)

MONUMENT 252

ALL DISTANCES ARE SHOWN IN U.S. SURVEY FEET.
BEARINGS ARE FOR TIE REFERENCE PURPOSES ONLY.

X = 542645.473 (Easting)
Y = 194454.693 (Northing)

Statements of evidence relative to this corner are on the following page(s).

I hereby certify that this document and the data contained herein was prepared by me or under my direct supervision this _____ day of _____, 20____.

SIGNATURE

Minnesota License No. _____

County Surveyor Land Surveyor

OFFICE OF COUNTY SURVEYOR

County of Ramsey

I hereby certify that this document was filed in the County Surveyor's office on the ____ day of _____, 20____.

David D. Claypool, P.L.S., County Surveyor

By _____, Deputy

MONUMENT 252

Found an odd sized iron monument, July, 1974.

Tied out iron monument which was approximately 0.15 ft. below surface, there appeared to be a metal plate with a hole in the middle over said iron, June 27, 1991.

Construction removed monument, 1995.

Contractor set a cast iron manhole assembly, 1996.

Reset monument location; set P.K. nails, September 3, 1997.

Set a 20 in. cast iron monument down +/-14 in., June 1, 1998.

Retied monument, July 31, 1998.

Retied monument, October 24, 2005.