

# MONUMENT 251

## CERTIFICATE OF LOCATION OF GOVERNMENT CORNER

Southwest Corner of Section 30, Township 30 North, Range 23 West, County of Ramsey, State of Minnesota.

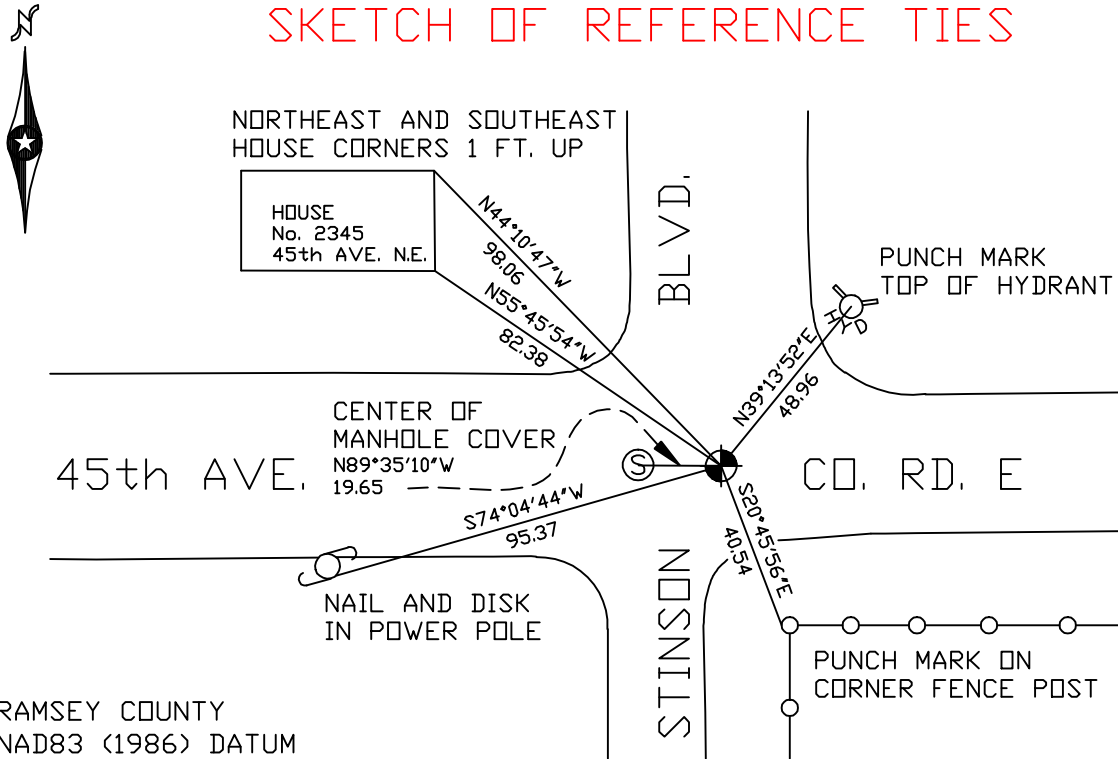
At the corner location shown on the sketch

On October 24, 2005 found a cast iron monument.

left monument as found     lowered monument     removed monument (explain)

On \_\_\_\_\_ placed a \_\_\_\_\_

### SKETCH OF REFERENCE TIES



RAMSEY COUNTY  
NAD83 (1986) DATUM

MONUMENT 251

X= 540400.091 (Easting)  
Y= 194415.021 (Northing)

ALL DISTANCES ARE SHOWN IN U.S. SURVEY FEET.  
BEARINGS ARE FOR TIE REFERENCE PURPOSES ONLY.

Statements of evidence relative to this corner are on the following page(s).

I hereby certify that this document and the data contained herein was prepared by me or under my direct supervision this \_\_\_\_\_ day of \_\_\_\_\_, 20\_\_\_\_.

SIGNATURE

Minnesota License No. \_\_\_\_\_

County Surveyor     Land Surveyor

OFFICE OF COUNTY SURVEYOR

County of Ramsey

I hereby certify that this document was filed in the County Surveyor's office on the \_\_\_\_ day of \_\_\_\_\_, 20\_\_\_\_.

David D. Claypool, P.L.S., County Surveyor

By \_\_\_\_\_, Deputy

## MONUMENT 251

**Found granite monument down  $7\frac{1}{4}$  in. and retied, July 12, 1974.**

**Placed short cast iron monument, July 17, 1975.**

**Removed  $4\frac{5}{8}$  in. cast iron monument, May 7, 1990.**

**Replaced  $4\frac{5}{8}$  in. cast iron monument and retied, July 12, 1990.**

**Retied monument, July 31, 1998.**

**Retied monument, October 24, 2005.**