

# MONUMENT 249

## CERTIFICATE OF LOCATION OF GOVERNMENT CORNER

Center of Section 25, Township 30 North, Range 22 West, County of Ramsey,  
State of Minnesota.

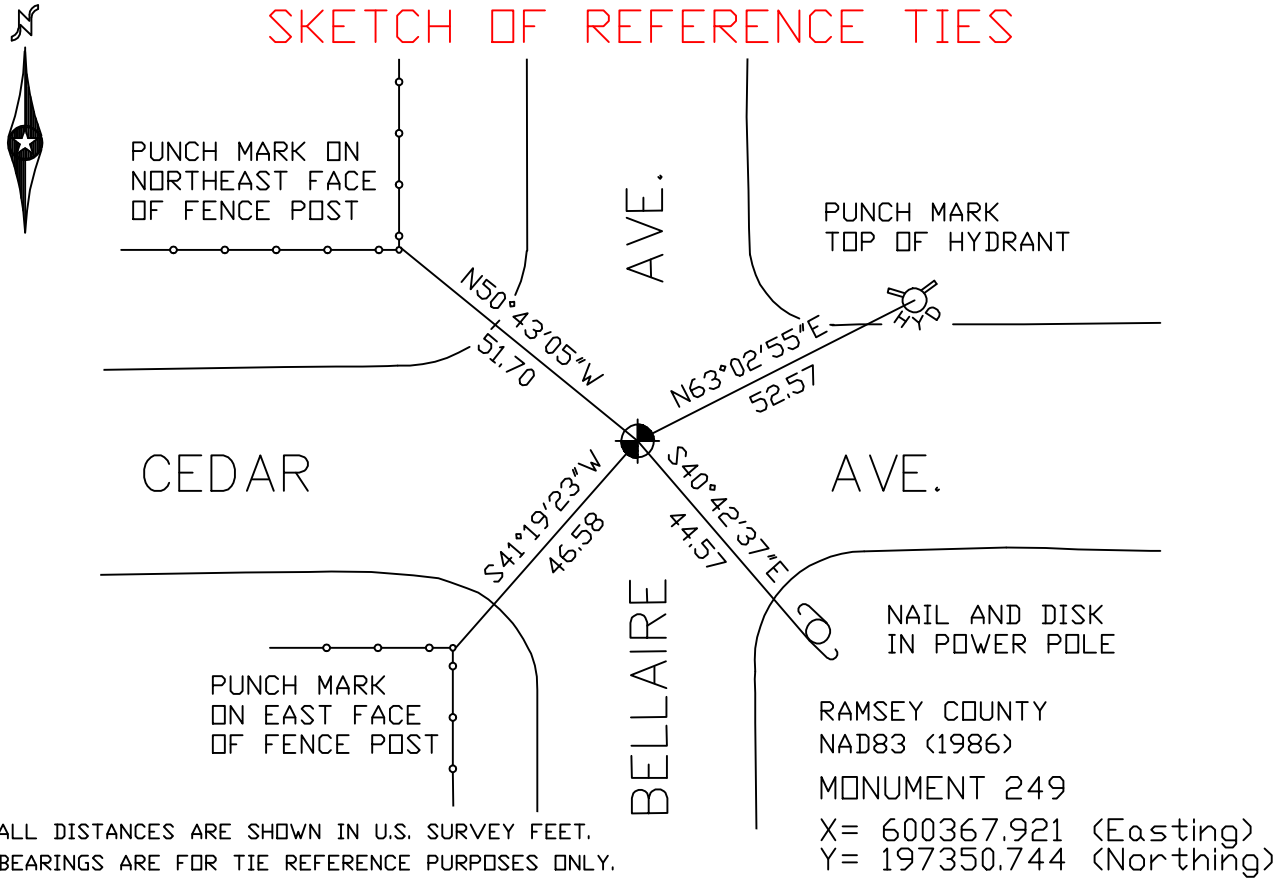
At the corner location shown on the sketch

On July 28, 2005 found a cast iron monument, flush.

left monument as found     lowered monument     removed monument (explain)

On \_\_\_\_\_ placed a \_\_\_\_\_

### SKETCH OF REFERENCE TIES



ALL DISTANCES ARE SHOWN IN U.S. SURVEY FEET.  
BEARINGS ARE FOR TIE REFERENCE PURPOSES ONLY.

X= 600367.921 (Easting)  
Y= 197350.744 (Northing)

Statements of evidence relative to this corner are on the following page(s).

I hereby certify that this document and the data contained herein was prepared by me or under my direct supervision this \_\_\_\_\_ day of \_\_\_\_\_, 20\_\_\_\_.

SIGNATURE

Minnesota License No. \_\_\_\_\_

County Surveyor     Land Surveyor

OFFICE OF COUNTY SURVEYOR

County of Ramsey

I hereby certify that this document was filed in the County Surveyor's office on the \_\_\_\_ day of \_\_\_\_\_, 20\_\_\_\_.

David D. Claypool, P.L.S., County Surveyor

By \_\_\_\_\_, Deputy

## MONUMENT 249

**Found granite monument down  $4\frac{3}{8}$  in., June 17, 1975.**

**Set short cast iron monument, July 10, 1975.**

**Retied monument, February 12, 1976.**

**Retied monument, June 21, 1991.**

**Set 20 in. cast iron monument, July 9, 1997.**

**Cemented monument, July 24, 1997.**

**Retied monument, December 11, 1998.**

**Retied monument, July 28, 2005.**