

MONUMENT 246

CERTIFICATE OF LOCATION OF GOVERNMENT CORNER

East Quarter Corner of Section 27, Township 30 North, Range 22 West,
County of Ramsey, State of Minnesota.

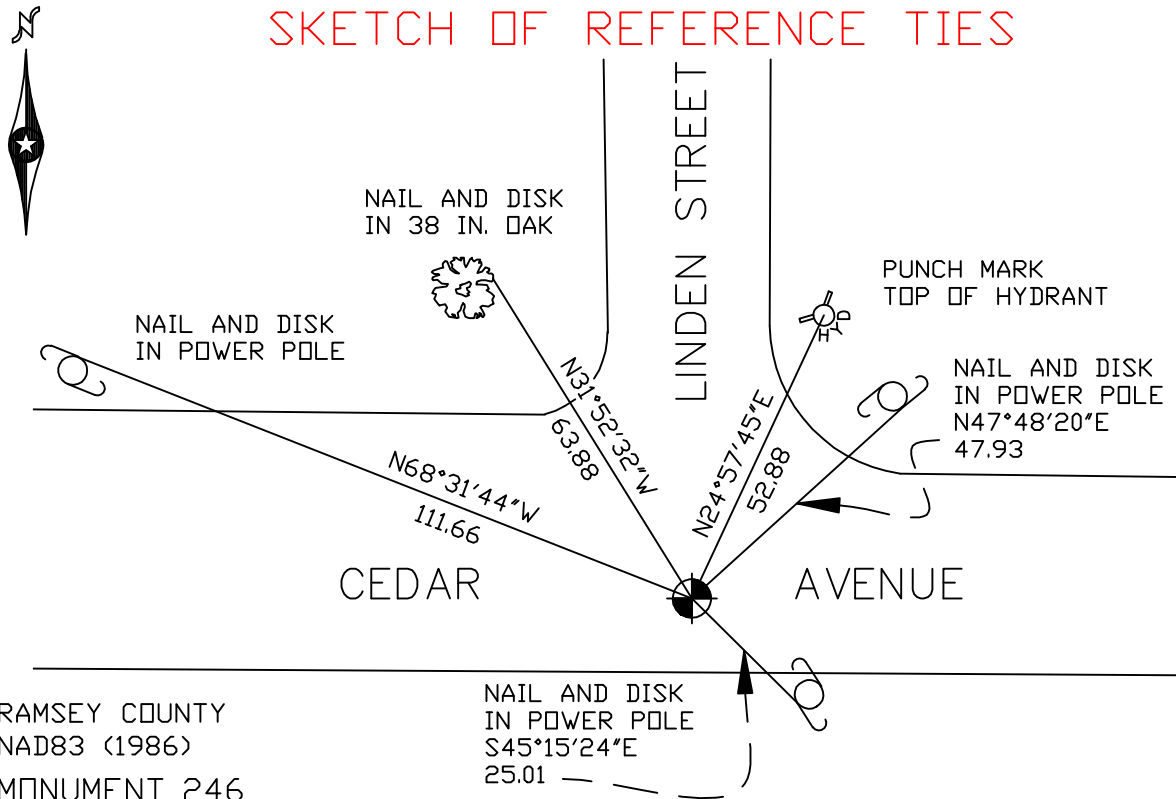
At the corner location shown on the sketch

On July 12, 2005 found a cast iron monument within a cast iron manhole
assembly.

left monument as found lowered monument removed monument (explain)

On _____ placed a _____

SKETCH OF REFERENCE TIES



RAMSEY COUNTY
NAD83 (1986)
MONUMENT 246

X= 592453.216 (Easting)
Y= 197351.530 (Northing)

ALL DISTANCES ARE SHOWN IN U.S. SURVEY FEET.
BEARINGS ARE FOR TIE REFERENCE PURPOSES ONLY.

Statements of evidence relative to this corner are on the following page(s).

I hereby certify that this document and the data contained herein was prepared by me or under my direct supervision this _____ day of _____, 20____.

SIGNATURE

Minnesota License No. _____

County Surveyor Land Surveyor

OFFICE OF COUNTY SURVEYOR

County of Ramsey

I hereby certify that this document was filed in the County Surveyor's office on the ____ day of _____, 20____.

David D. Claypool, P.L.S., County Surveyor

By _____, Deputy

MONUMENT 246

Found railroad spike at surface, May 29, 1974.

**Placed cast iron monument; old ties checked to railroad spike,
August 27, 1975.**

Retied monument, February, 1984.

Retried monument, June 21, 1991.

Retied monument, December 11, 1996.

**Tied out and removed 20 in. cast iron monument for City of White Bear Lake
road reconstruction, May 22, 2002.**

Retied monument, July 12, 2005.