

# MONUMENT 243

## CERTIFICATE OF LOCATION OF GOVERNMENT CORNER

Center of Section 28, Township 30 North, Range 22 West, County of Ramsey,  
State of Minnesota.

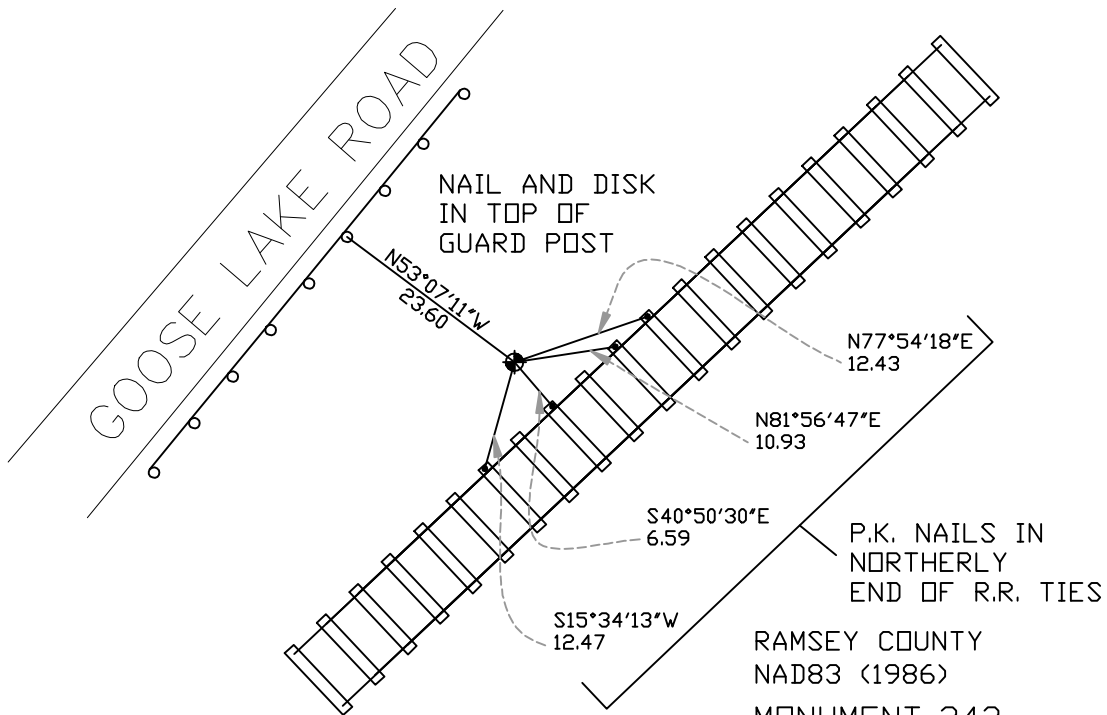
At the corner location shown on the sketch

On March 28, 2005 found a cast iron monument.

left monument as found     lowered monument     removed monument (explain)

On \_\_\_\_\_ placed a \_\_\_\_\_

### SKETCH OF REFERENCE TIES



ALL DISTANCES ARE SHOWN IN U.S. SURVEY FEET.  
BEARINGS ARE FOR TIE REFERENCE PURPOSES ONLY.

RAMSEY COUNTY  
NAD83 (1986)  
MONUMENT 243  
X= 584541.419 (Easting)  
Y= 197327.375 (Northing)

Statements of evidence relative to this corner are on the following page(s).

I hereby certify that this document and the data contained herein was prepared by me or under my direct supervision this \_\_\_\_\_ day of \_\_\_\_\_, 20\_\_\_\_.

SIGNATURE

Minnesota License No. \_\_\_\_\_

County Surveyor     Land Surveyor

OFFICE OF COUNTY SURVEYOR

County of Ramsey

I hereby certify that this document was filed in the County Surveyor's office on the \_\_\_\_ day of \_\_\_\_\_, 20\_\_\_\_.

David D. Claypool, P.L.S., County Surveyor

By \_\_\_\_\_, Deputy

## MONUMENT 243

**Found 1/2 in. inside diameter pipe over granite monument, down 1.3 ft.,  
May, 1974.**

**Placed cast iron monument and concrete around base and tied out,  
May 28, 1974.**

**Retied monument, April 18, 1988.**

**Found cast iron monument and ties; set sign and post +/- 0.4 ft. northeasterly  
of monument, October 2, 1996.**

**Retied monument, sign and post gone, March 28, 2005.**