

MONUMENT 240

CERTIFICATE OF LOCATION OF GOVERNMENT CORNER

West Quarter Corner of Section 29, Township 30 North, Range 22 West,
County of Ramsey, State of Minnesota.

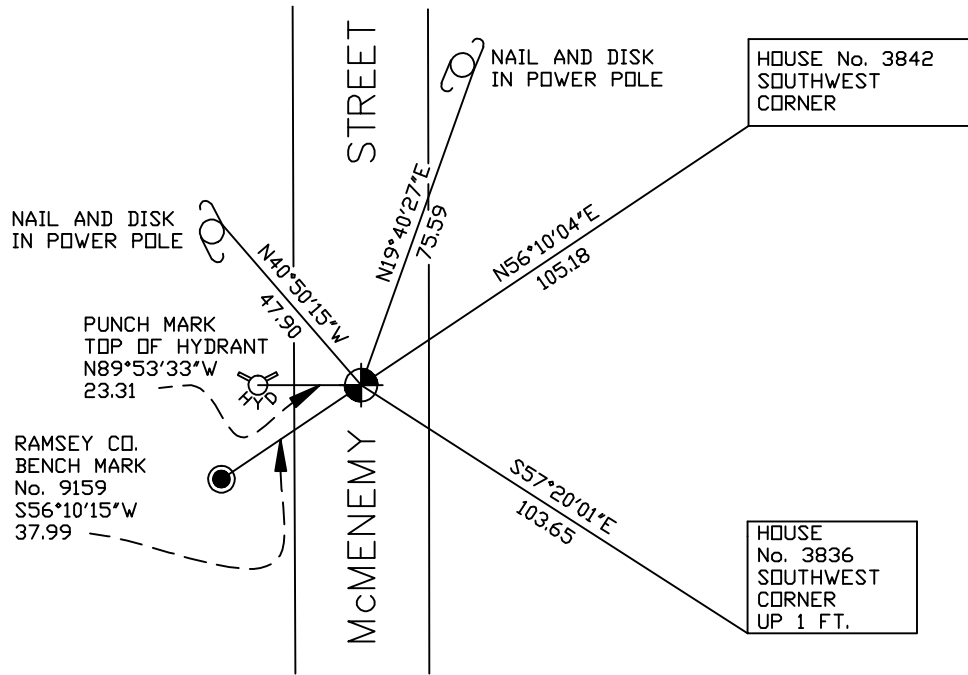
At the corner location shown on the sketch

On March 14, 2005 found a cast iron monument within a cast iron manhole assembly.

left monument as found lowered monument removed monument (explain)

On _____ placed a _____

SKETCH OF REFERENCE TIES



RAMSEY COUNTY
NAD83 (1986)

MONUMENT 240

X= 576644.173 (Easting)
Y= 197294.534 (Northing)

ALL DISTANCES ARE SHOWN IN U.S. SURVEY FEET.
BEARINGS ARE FOR TIE REFERENCE PURPOSES ONLY.

Statements of evidence relative to this corner are on the following page(s).

I hereby certify that this document and the data contained herein was prepared by me or under my direct supervision this _____ day of _____, 20____.

SIGNATURE

Minnesota License No. _____

County Surveyor Land Surveyor

OFFICE OF COUNTY SURVEYOR

County of Ramsey

I hereby certify that this document was filed in the County Surveyor's office on the ____ day of _____, 20____.

David D. Claypool, P.L.S., County Surveyor

By _____, Deputy

MONUMENT 240

Found 2 in. diameter, 2 ft. long solid iron, bent over. Dug down 0.05 ft. and found spike toward tie; dug down 0.1 ft. and found spike that matched old ties; dug down to bottom of 2 in. iron and uprighted; the iron then matched ties. Placed cast iron monument using old ties and bottom of 2 in. iron, June 24, 1974.

Retied monument, September 11, 1974.

Retied monument, December 20, 1991.

Retied monument, June 11, 2001.

Lowered monument 18 in., July 3, 2001.

Set P.K. nails and manhole assembly, July 15, 2001.

Retied monument, March 14, 2005.