

# MONUMENT 236

## CERTIFICATE OF LOCATION OF GOVERNMENT CORNER

West Quarter Corner of Section 25, Township 30 North, Range 23 West,  
County of Ramsey, State of Minnesota.

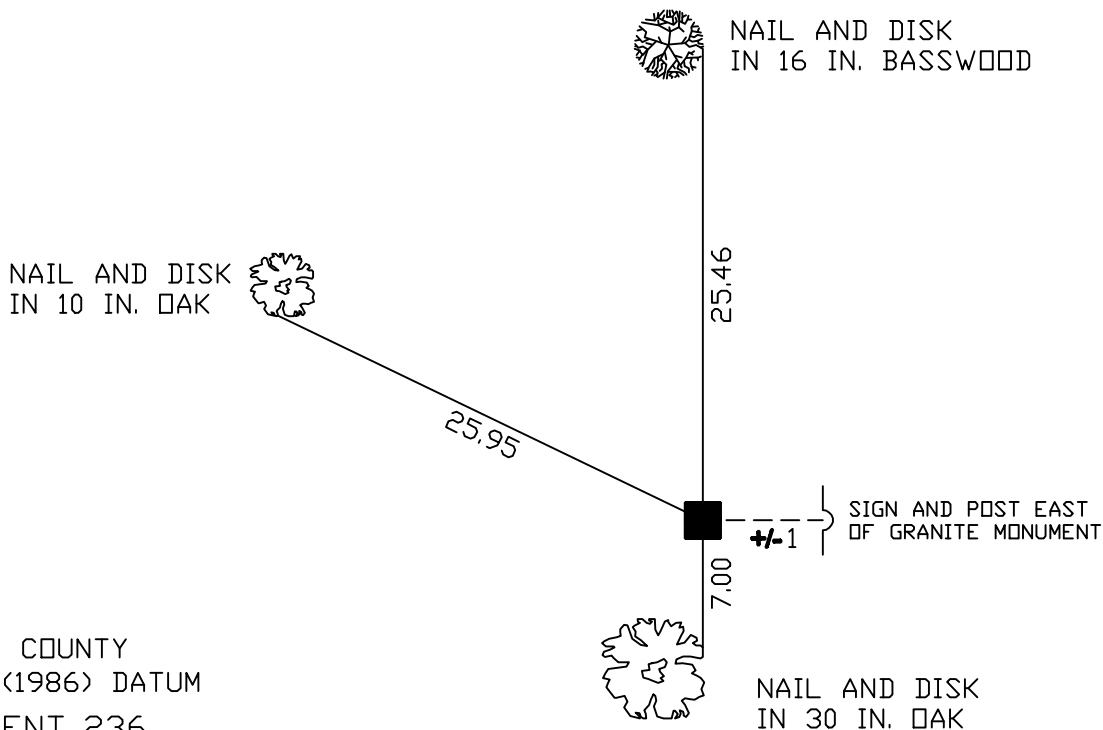
At the corner location shown on the sketch

On October 25, 2005 found a granite monument up 2 in.

left monument as found     lowered monument     removed monument (explain)

On \_\_\_\_\_ placed a \_\_\_\_\_

### SKETCH OF REFERENCE TIES



RAMSEY COUNTY  
NAD83 (1986) DATUM  
MONUMENT 236

X= 566308.854 (Easting)  
Y= 197246.345 (Northing)

ALL DISTANCES ARE SHOWN IN U.S. SURVEY FEET.

Statements of evidence relative to this corner are on the following page(s).

I hereby certify that this document and the data contained herein was prepared by me or under my direct supervision this \_\_\_\_\_ day of \_\_\_\_\_, 20\_\_\_\_.

SIGNATURE

Minnesota License No. \_\_\_\_\_

County Surveyor     Land Surveyor

#### OFFICE OF COUNTY SURVEYOR

County of Ramsey

I hereby certify that this document was filed in the County Surveyor's office on the \_\_\_\_ day of \_\_\_\_\_, 20\_\_\_\_.

David D. Claypool, P.L.S., County Surveyor

By \_\_\_\_\_, Deputy

## MONUMENT 236

**Found granite monument flush, retied, October 10, 1974.**

**Retied monument, set sign and post, August 14, 1996.**

**Found granite monument up 2 in. and retied, October 25, 2005.**