

MONUMENT 225

CERTIFICATE OF LOCATION OF GOVERNMENT CORNER

Southeast Corner of Section 24, Township 30 North, Range 22 West,
County of Ramsey, State of Minnesota.

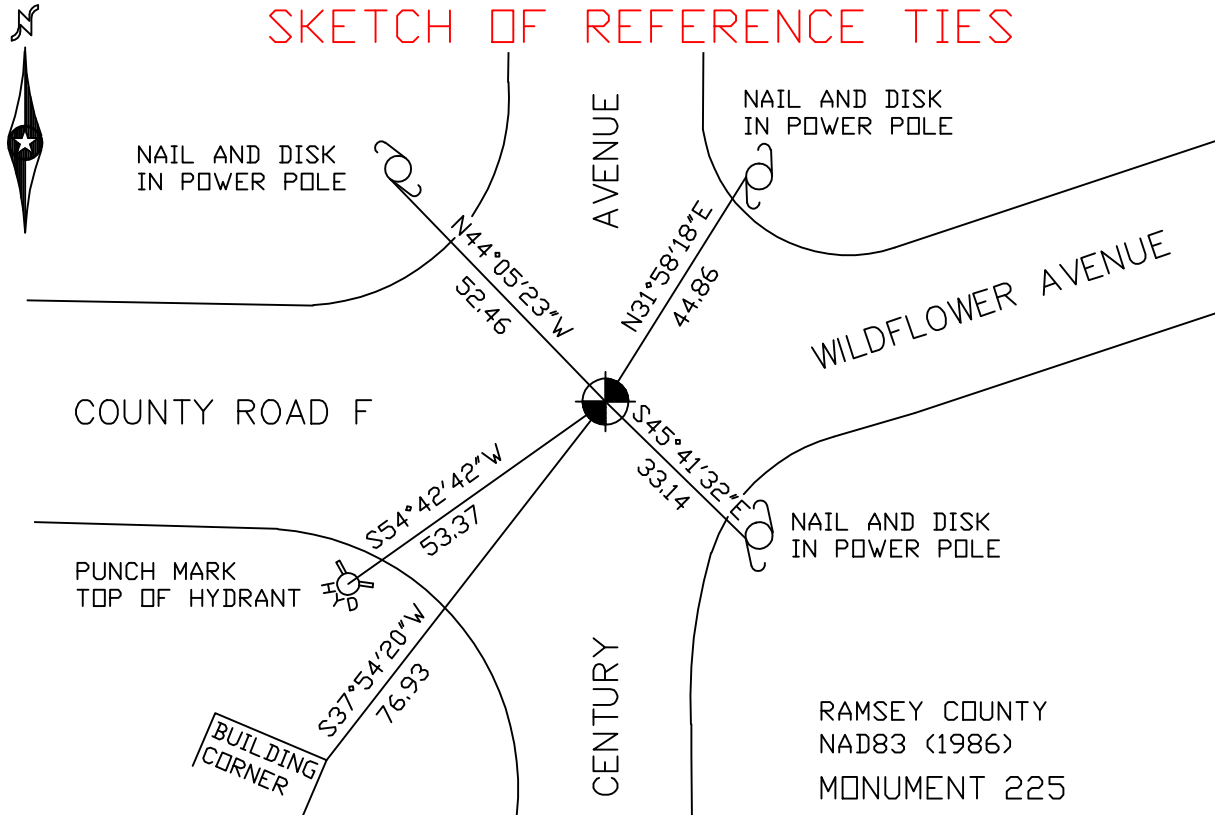
At the corner location shown on the sketch

On March 29, 2005 found a granite monument.

left monument as found lowered monument removed monument (explain)

On July 11, 2005 placed a 3 1/2 in. cast iron monument over the top of
the granite monument and cemented in place.

SKETCH OF REFERENCE TIES



ALL DISTANCES ARE SHOWN IN U.S. SURVEY FEET.
BEARINGS ARE FOR TIE REFERENCE PURPOSES ONLY.

RAMSEY COUNTY
NAD83 (1986)
MONUMENT 225
X= 602979.144 (Easting)
Y= 200010.657 (Northing)

Statements of evidence relative to this corner are on the following page(s).

I hereby certify that this document and the data contained herein was prepared by me or under my direct supervision this _____ day of _____, 20____.

SIGNATURE

Minnesota License No. _____

County Surveyor Land Surveyor

OFFICE OF COUNTY SURVEYOR

County of Ramsey

I hereby certify that this document was filed in the County Surveyor's office on the ____ day of _____, 20____.

David D. Claypool, P.L.S., County Surveyor

By _____, Deputy

MONUMENT 225

Found granite monument down 0.5 ft, may have iron pipe on each side of monument, but did not dig up, May 28, 1974.

Placed short cast iron monument over granite monument, December 3, 1974.

Retied monument, January 29, 1976.

Retied monument, June 25, 1991.

Ties checked, June 12, 1998.

Found short cast iron monument missing and retied granite monument, March 29, 2005.

Replaced missing cast iron monument with a 3½ in. cast iron monument on top of granite monument and cemented into place, July 11, 2005.