

MONUMENT 225N

CERTIFICATE OF LOCATION OF GOVERNMENT CORNER

Meander Corner No. 6 on the East Line of the Southwest Quarter of Section 24, Township 30 North, Range 22 West, County of Ramsey, State of Minnesota.

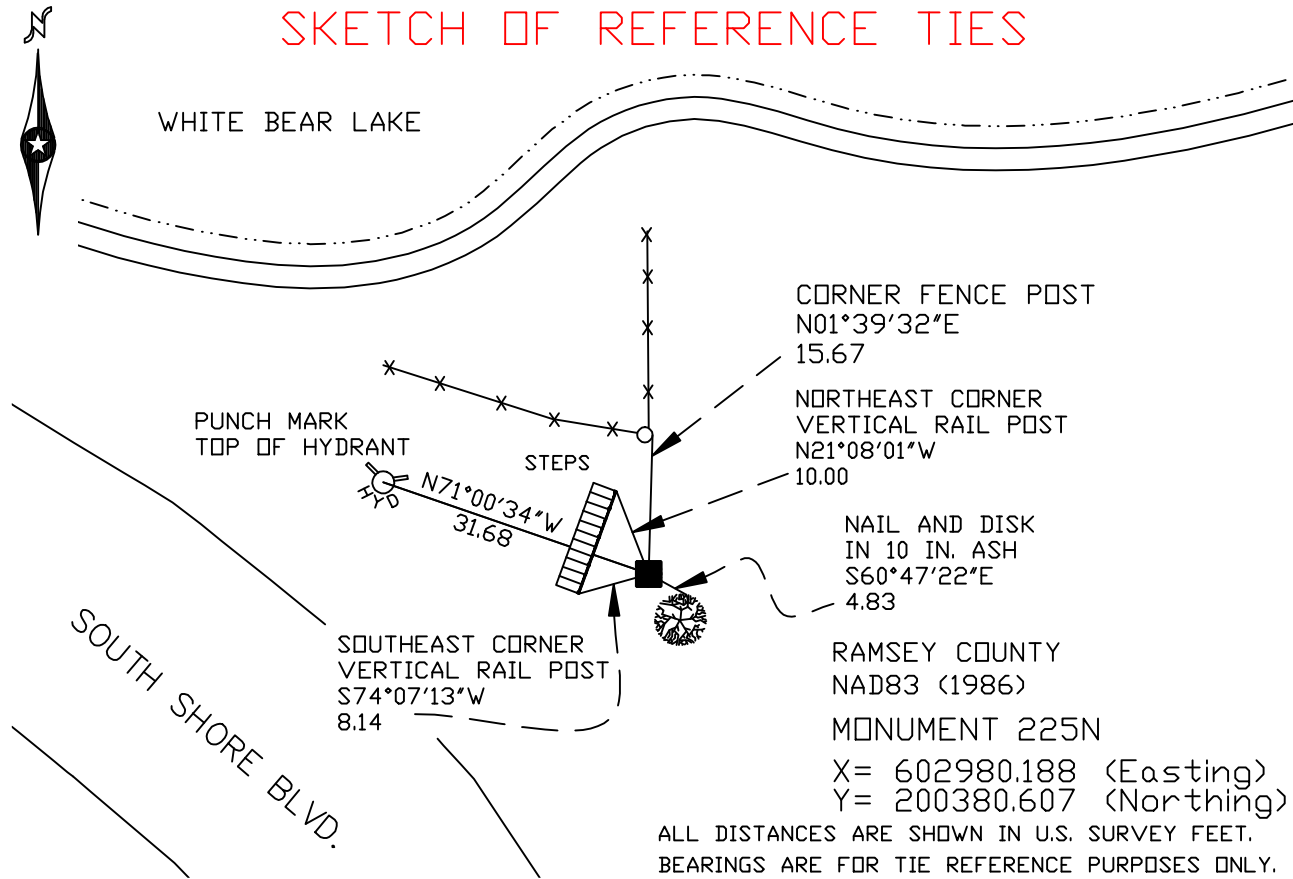
At the corner location shown on the sketch

On March 29, 2005 found a granite monument.

left monument as found lowered monument removed monument (explain)

On _____ placed a _____

SKETCH OF REFERENCE TIES



Statements of evidence relative to this corner are on the following page(s).

I hereby certify that this document and the data contained herein was prepared by me or under my direct supervision this _____ day of _____, 20____.

SIGNATURE

Minnesota License No. _____

County Surveyor Land Surveyor

OFFICE OF COUNTY SURVEYOR

County of Ramsey

I hereby certify that this document was filed in the County Surveyor's office on the ____ day of _____, 20____.

David D. Claypool, P.L.S., County Surveyor

By _____, Deputy

MONUMENT 225N

Found granite monument, May, 1974.

Found granite on side of embankment. Placed sign and post +/-1 ft. northeasterly of granite monument, tied monument, September 18, 1996.

Retied monument, August 27, 1999.

Retied monument, March 29, 2005.