

MONUMENT 224

CERTIFICATE OF LOCATION OF GOVERNMENT CORNER

South Quarter Corner of Section 24, Township 30 North, Range 22 West,
County of Ramsey, State of Minnesota.

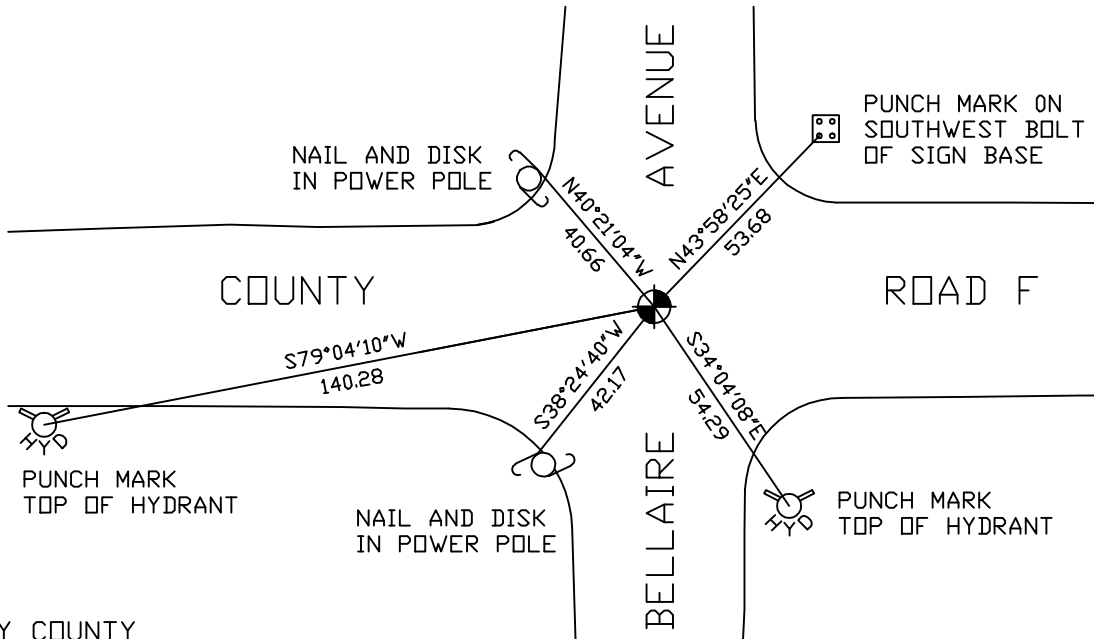
At the corner location shown on the sketch

On March 29, 2005 found a cast iron monument.

left monument as found lowered monument removed monument (explain)

On _____ placed a _____

SKETCH OF REFERENCE TIES



RAMSEY COUNTY
NAD83 (1986) DATUM

MONUMENT 224

X= 600349.554 (Easting)
Y= 199994.148 (Northing)

ALL DISTANCES ARE SHOWN IN U.S. SURVEY FEET.
BEARINGS ARE FOR TIE REFERENCE PURPOSES ONLY.

Statements of evidence relative to this corner are on the following page(s).

I hereby certify that this document and the data contained herein was prepared by me or under my direct supervision this _____ day of _____, 20____.

SIGNATURE

Minnesota License No. _____

County Surveyor Land Surveyor

OFFICE OF COUNTY SURVEYOR

County of Ramsey

I hereby certify that this document was filed in the County Surveyor's office on the ____ day of _____, 20____.

David D. Claypool, P.L.S., County Surveyor

By _____, Deputy

MONUMENT 224

Found granite monument down 0.3 ft., May 28, 1974.

Placed cast iron cap and bolt monument over granite, June 4, 1974.

Retied monument, June 25, 1974.

Retied monument, January 29, 1976.

Checked ties, June 25, 1991.

Monument removed for maintenance, June 11, 1993.

Placed P.K. nail at location and retied, September 3, 1993.

Set 20 in. cast iron monument, October, 1994.

Short ties checked, June 12, 1998.

Retied monument, March 29, 2005.