

# MONUMENT 224N

## CERTIFICATE OF LOCATION OF GOVERNMENT CORNER

A Monument on the North-South Quarter Line of Section 24, Township 30 North, Range 22 West, County of Ramsey, State of Minnesota.

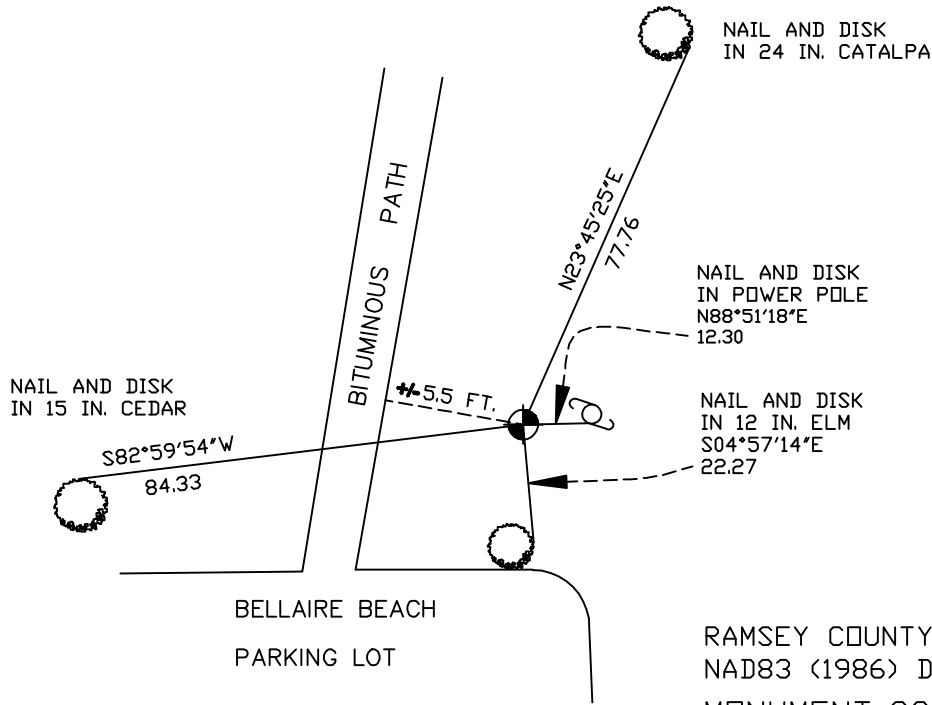
At the corner location shown on the sketch

On October 27, 2005 found a cast iron monument.

left monument as found     lowered monument     removed monument (explain)

On \_\_\_\_\_ placed a \_\_\_\_\_

## SKETCH OF REFERENCE TIES



RAMSEY COUNTY  
NAD83 (1986) DATUM  
MONUMENT 224N

County coordinates  
not available.

ALL DISTANCES ARE SHOWN IN U.S. SURVEY FEET.  
BEARINGS ARE FOR TIE REFERENCE PURPOSES ONLY.

Statements of evidence relative to this corner are on the following page(s).

I hereby certify that this document and the data contained herein was prepared by me or under my direct supervision this \_\_\_\_\_ day of \_\_\_\_\_, 20\_\_\_\_.

SIGNATURE

Minnesota License No. \_\_\_\_\_

County Surveyor     Land Surveyor

OFFICE OF COUNTY SURVEYOR

County of Ramsey

I hereby certify that this document was filed in the County Surveyor's office on the \_\_\_\_ day of \_\_\_\_\_, 20\_\_\_\_.

David D. Claypool, P.L.S., County Surveyor

By \_\_\_\_\_, Deputy

## MONUMENT 224N

**Prolonged boat spike at Bellaire Ave. and South Shore Blvd. north 409.6 ft., dug a hole 1 ft. wide and 3 ft. in the north/south direction to a depth of 2 ft., May 15, 1975.**

**Set a 20 in. cast iron monument flush on line, August, 1994.**

**Retied monument, September 27, 1994.**

**Retied monument, August 27, 1999.**

**Retied monument, October 27, 2005.**