

# MONUMENT 223W

## CERTIFICATE OF LOCATION OF GOVERNMENT CORNER

A Witness Corner to the west of the Southwest Corner of Section 23,  
Township 30 North, Range 22 West, County of Ramsey, State of Minnesota.

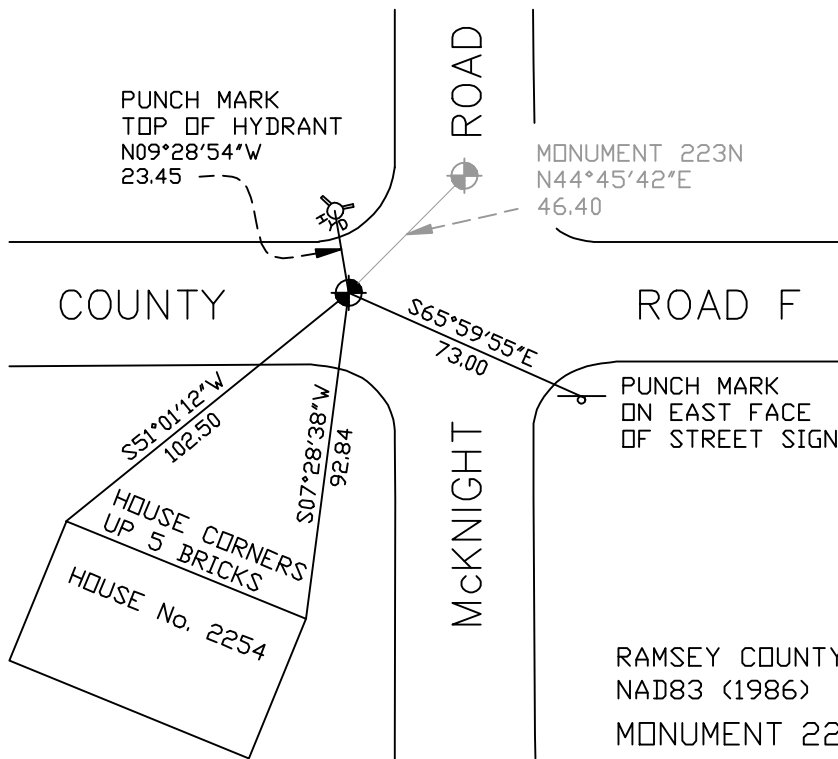
At the corner location shown on the sketch

On March 29, 2005 found a cast iron monument.

left monument as found     lowered monument     removed monument (explain)

On June 16, 2006 placed a 20 in. cast iron monument.

## SKETCH OF REFERENCE TIES



ALL DISTANCES ARE SHOWN IN U.S. SURVEY FEET.  
BEARINGS ARE FOR TIE REFERENCE PURPOSES ONLY.

X= 597680.329 (Easting)  
Y= 199969.801 (Northing)

Statements of evidence relative to this corner are on the following page(s).

I hereby certify that this document and the data  
contained herein was prepared by me or under  
my direct supervision this \_\_\_\_\_ day  
of \_\_\_\_\_, 20\_\_\_\_.

SIGNATURE

Minnesota License No. \_\_\_\_\_

County Surveyor     Land Surveyor

OFFICE OF COUNTY SURVEYOR

County of Ramsey

I hereby certify that this document was filed in  
the County Surveyor's office on the \_\_\_\_ day  
of \_\_\_\_\_, 20\_\_\_\_.

David D. Claypool, P.L.S., County Surveyor

By \_\_\_\_\_, Deputy

## MONUMENT 223W

**Manhole at intersection. See Survey Book No.1 for location check. Set cast iron monument 33.0 ft. west of corner location, on the south line of the section, August 25, 1975.**

**Retied monument, March 22, 1976.**

**Checked short ties, June 25, 1991.**

**Checked short ties, June 12, 1998.**

**Retied monument, March 29, 2005.**

**Monument destroyed due to water main break, December, 2005.**

**Reset 20 in cast iron monument, using monument ties of record, June 16, 2006.**