

MONUMENT 223N

CERTIFICATE OF LOCATION OF GOVERNMENT CORNER

A Witness Corner to the north of the Southwest Corner of Section 23,
Township 30 North, Range 22 West, County of Ramsey, State of Minnesota.

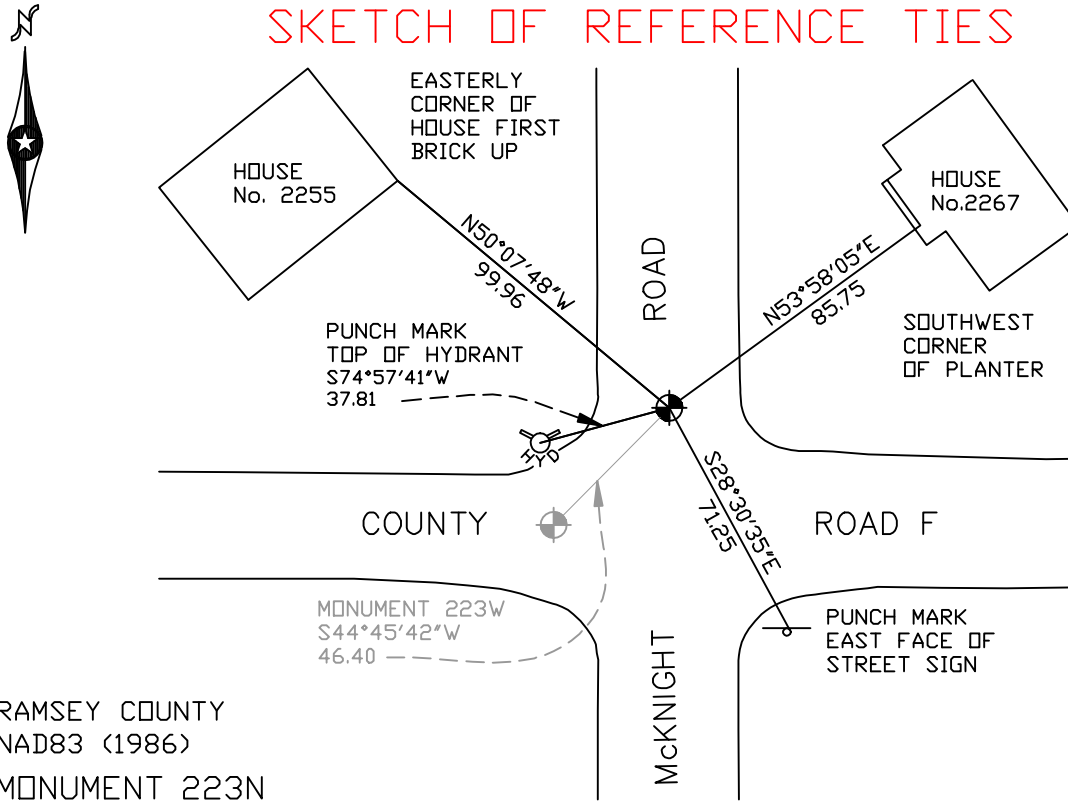
At the corner location shown on the sketch

On March 29, 2005 found a cast iron monument.

left monument as found lowered monument removed monument (explain)

On _____ placed a _____

SKETCH OF REFERENCE TIES



RAMSEY COUNTY
NAD83 (1986)
MONUMENT 223N

X= 597713.003 (Easting)
Y= 200002.748 (Northing)

ALL DISTANCES ARE SHOWN IN U.S. SURVEY FEET.
BEARINGS ARE FOR TIE REFERENCE PURPOSES ONLY.

Statements of evidence relative to this corner are on the following page(s).

I hereby certify that this document and the data contained herein was prepared by me or under my direct supervision this _____ day of _____, 20____.

SIGNATURE

Minnesota License No. _____

County Surveyor Land Surveyor

OFFICE OF COUNTY SURVEYOR

County of Ramsey

I hereby certify that this document was filed in the County Surveyor's office on the ____ day of _____, 20____.

David D. Claypool, P.L.S., County Surveyor

By _____, Deputy

MONUMENT 223N

Manhole at intersection. See Survey Book No.1 for location check. Set cast iron monument 33.00 ft. north of corner location, on the east line of the southeast quarter, August 25, 1975.

Retied monument, March 22, 1976.

Checked short ties, June 25, 1991.

Checked short ties, June 12, 1998.

Retied monument, March 29, 2005.