

# MONUMENT 223NWC

## CERTIFICATE OF LOCATION OF GOVERNMENT CORNER

A Witness Monument to Meander Corner No. 5 on the East Line of the Southeast Quarter of Section 23, Township 30 North, Range 22 West, County of Ramsey, State of Minnesota.

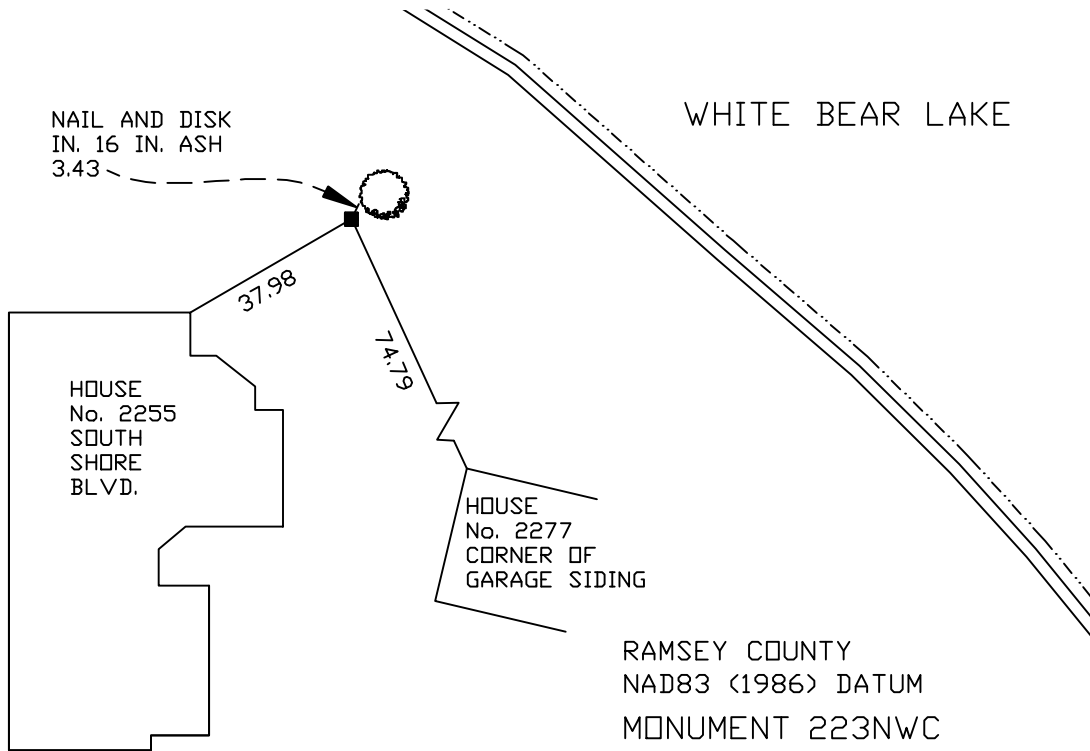
At the corner location shown on the sketch

On October 13, 2005 found a granite monument.

left monument as found     lowered monument     removed monument (explain)

On \_\_\_\_\_ placed a \_\_\_\_\_

## SKETCH OF REFERENCE TIES



ALL DISTANCES ARE SHOWN IN U.S. SURVEY FEET.

RAMSEY COUNTY  
 NAD83 (1986) DATUM  
 MONUMENT 223NWC  
 X= 597696.500 (Easting)  
 Y= 201944.351 (Northing)

Statements of evidence relative to this corner are on the following page(s).

I hereby certify that this document and the data contained herein was prepared by me or under my direct supervision this \_\_\_\_\_ day of \_\_\_\_\_, 20\_\_\_\_.

SIGNATURE

Minnesota License No. \_\_\_\_\_

County Surveyor     Land Surveyor

OFFICE OF COUNTY SURVEYOR

County of Ramsey

I hereby certify that this document was filed in the County Surveyor's office on the \_\_\_\_ day of \_\_\_\_\_, 20\_\_\_\_.

David D. Claypool, P.L.S., County Surveyor

By \_\_\_\_\_, Deputy

## MONUMENT 223NWC

**Original monument re-set, February 14, 1934.**

**Original monument moved south 48.0 ft., May 8, 1934.**

**Found granite monument flush, May 17, 1975.**

**Retied monument, April 5, 1984.**

**Retied granite monument, September 3, 1993.**

**Set sign and post north; retied monument, August 27, 1999.**

**Retied monument, October 13, 2005.**