

MONUMENT 21SC

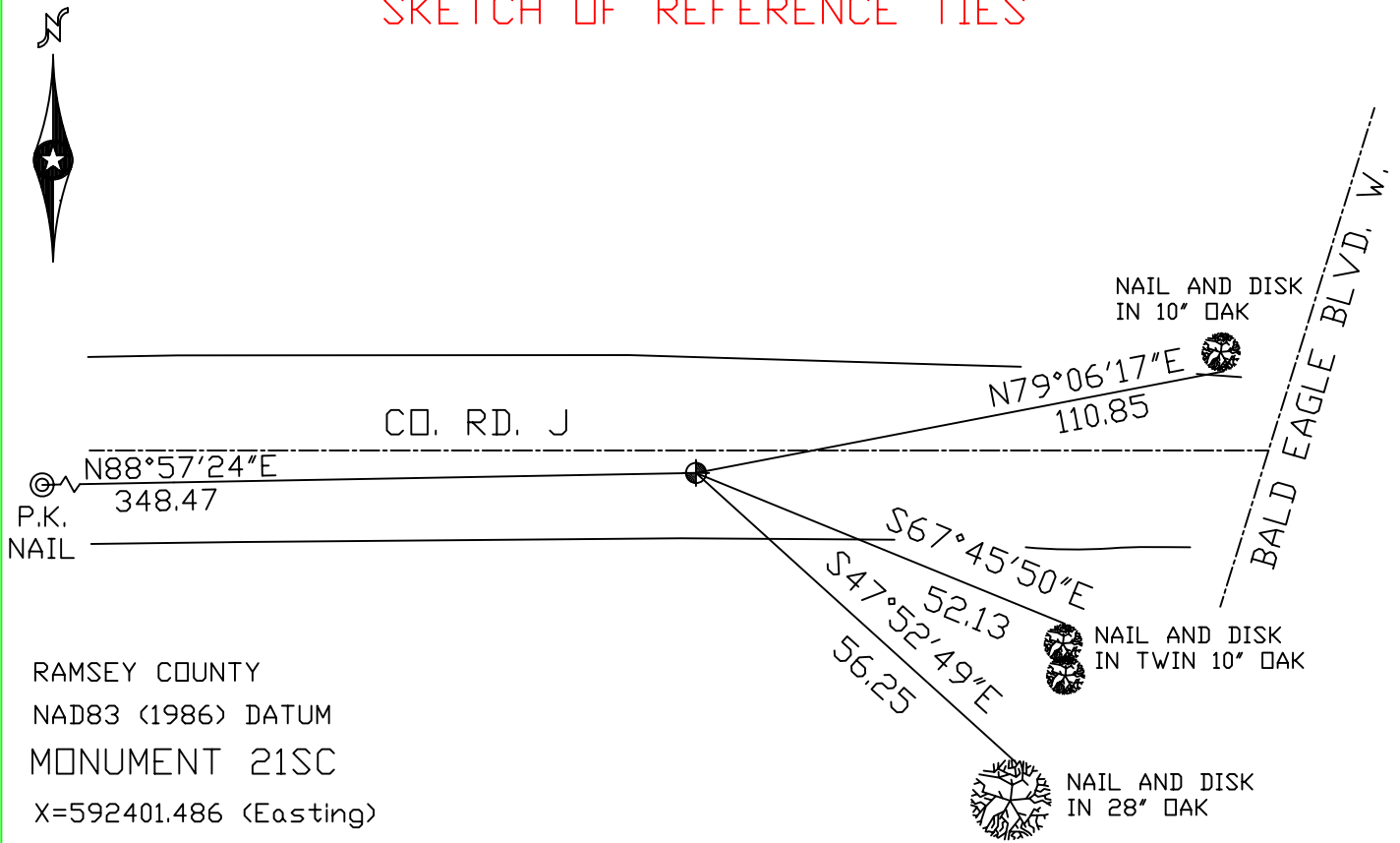
CERTIFICATE OF LOCATION OF GOVERNMENT CORNER

Northeast Corner of Section 3, Township 30 North, Range 22 West, County of Ramsey, State of Minnesota.

At the corner location shown on the sketch

- On October 11, 2005 found a cast iron monument marked "3RD CORRECTION LINE", (2744.41 ft. east of monument 19E).
- left monument as found, lowered monument, removed monument (explain)
- On _____ placed a _____

SKETCH OF REFERENCE TIES



RAMSEY COUNTY
 NAD83 (1986) DATUM
 MONUMENT 21SC
 X=592401.486 (Easting)
 Y=221527.917 (Northing)
 Closing Corner is 5.18 ft. north.

ALL DISTANCES ARE SHOWN IN U.S. SURVEY FEET.
 BEARINGS ARE FOR TIE REFERENCE PURPOSES ONLY.

Statements of evidence relative to this corner are on the following page(s).

I hereby certify that this document and the data contained herein was prepared by me or under my direct supervision this _____ day of _____, 20____.

SIGNATURE

- Minnesota License No. _____
- Land Surveyor Professional Engineer
 County Surveyor County Engineer

OFFICE OF COUNTY SURVEYOR

County of Ramsey

I hereby certify that this document was filed in the County Surveyor's office on the _____ day of _____, 20____.

David D. Claypool, P.L.S., County Surveyor

By _____, Deputy

MONUMENT 21SC

Found granite monument, down 0.1 ft., in center line of the road,
May 6, 1974.

Retied monument, October 21, 1974.

Retied cast iron cap, flush, December 28, 1992.

Set a 20 in. cast iron standard corner (SC) monument marked, "3RD
CORRECTION LINE", 5.18 ft. south of "Closing Corner", (original
granite monument location), July, 1996.

Ties checked, June 15, 1998.

Retied monument 21SC, October 11, 2005.