

MONUMENT 219

CERTIFICATE OF LOCATION OF GOVERNMENT CORNER

Southeast Corner of Section 21, Township 30 North, Range 22 West, County of Ramsey, State of Minnesota.

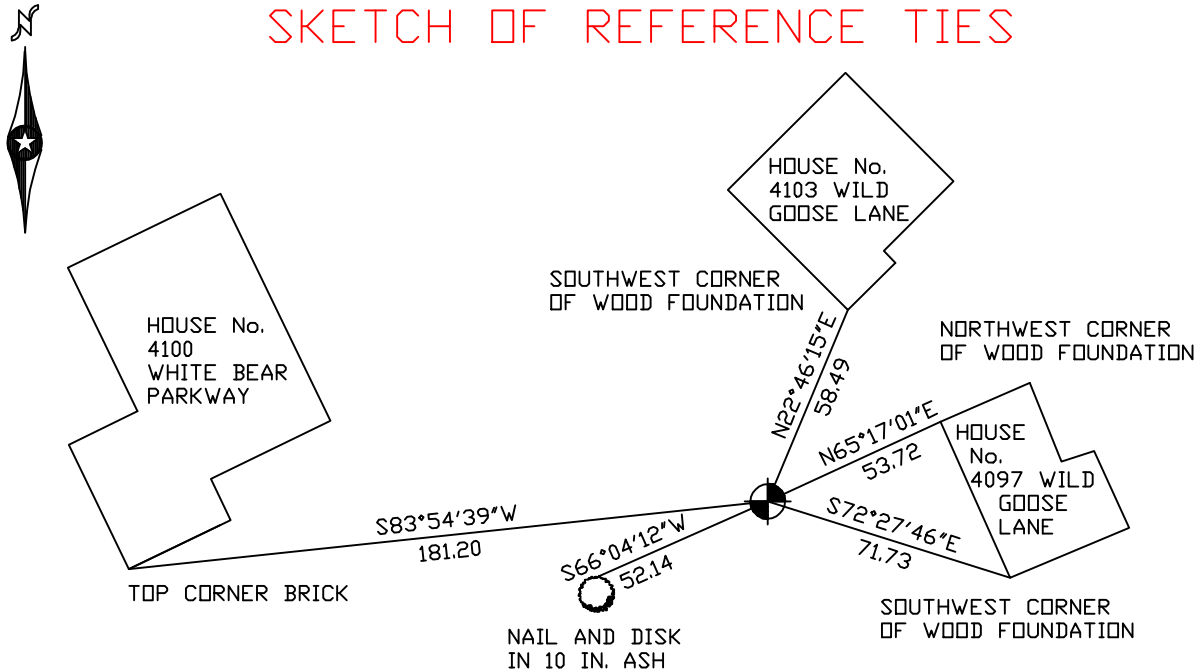
At the corner location shown on the sketch

On October 13, 2005 found a cast iron monument.

left monument as found lowered monument removed monument (explain)

On _____ placed a _____

SKETCH OF REFERENCE TIES



RAMSEY COUNTY
NAD83 (1986) DATUM

MONUMENT 219

X= 587183.093 (Easting)
Y= 199988.952 (Northing)

ALL DISTANCES ARE SHOWN IN U.S. SURVEY FEET.
BEARINGS ARE FOR TIE REFERENCE PURPOSES ONLY.

Statements of evidence relative to this corner are on the following page(s).

I hereby certify that this document and the data contained herein was prepared by me or under my direct supervision this _____ day of _____, 20____.

SIGNATURE

Minnesota License No. _____

County Surveyor Land Surveyor

OFFICE OF COUNTY SURVEYOR

County of Ramsey

I hereby certify that this document was filed in the County Surveyor's office on the ____ day of _____, 20____.

David D. Claypool, P.L.S., County Surveyor

By _____, Deputy

MONUMENT 219

Found granite monument down 0.1 ft., retied, May 29, 1974.

Monument tied with long ties. Monument to be removed during grading.

Located position and set 20 in. cast iron monument, May 15, 1992.

Retied monument, October 27, 1992.

Retied monument, October 1, 1999.

Retied monument, October 13, 2005.