

MONUMENT 218

CERTIFICATE OF LOCATION OF GOVERNMENT CORNER

South Quarter Corner of Section 21, Township 30 North, Range 22 West,
County of Ramsey, State of Minnesota.

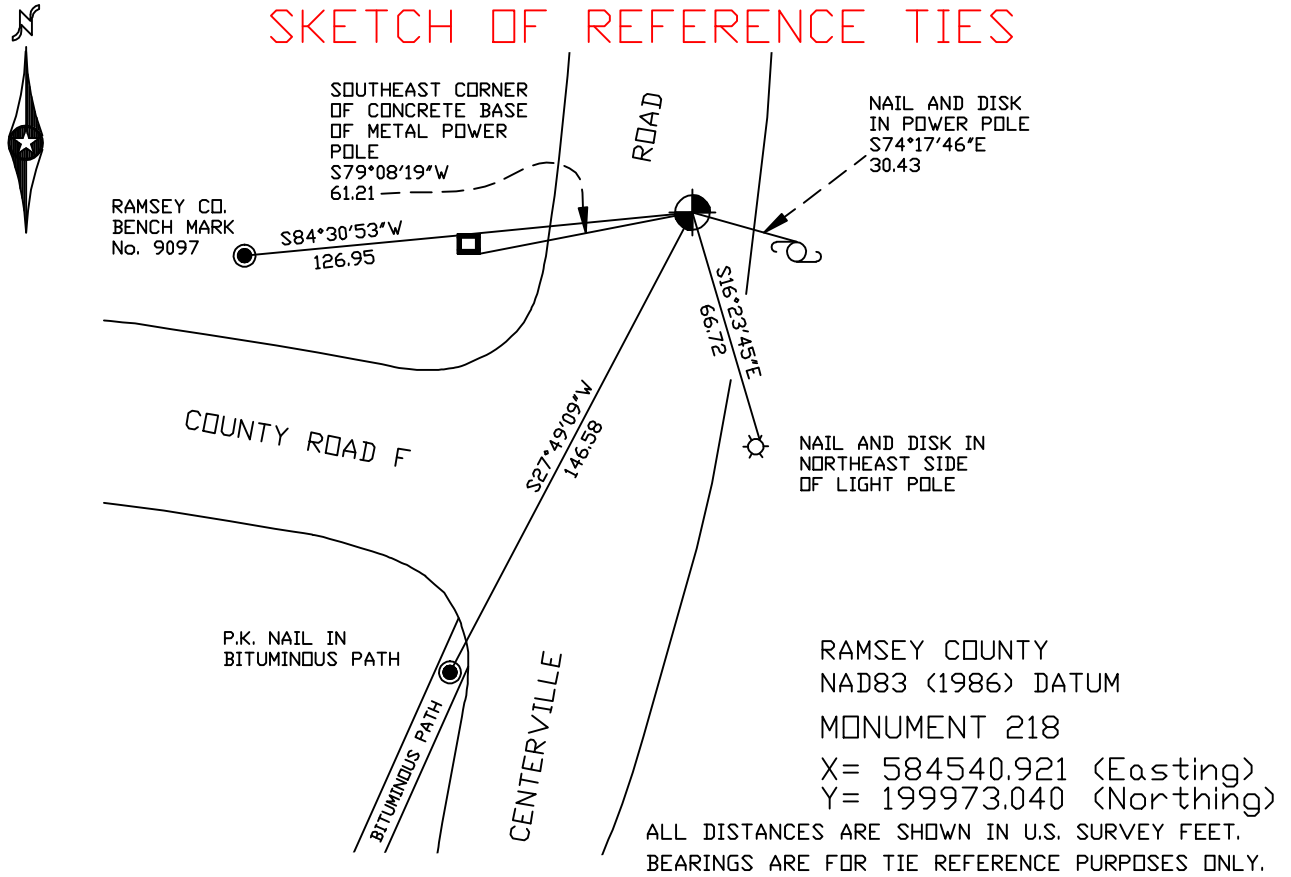
At the corner location shown on the sketch

On March 23, 2005 found a cast iron monument within a cast iron manhole
assembly.

left monument as found lowered monument removed monument (explain)

On _____ placed a _____

SKETCH OF REFERENCE TIES



Statements of evidence relative to this corner are on the following page(s).

I hereby certify that this document and the data contained herein was prepared by me or under my direct supervision this _____ day of _____, 20____.

SIGNATURE

Minnesota License No. _____

County Surveyor Land Surveyor

OFFICE OF COUNTY SURVEYOR

County of Ramsey

I hereby certify that this document was filed in the County Surveyor's office on the ____ day of _____, 20____.

David D. Claypool, P.L.S., County Surveyor

By _____, Deputy

MONUMENT 218

Found granite monument down 0.1 ft. on center line of Centerville Road, June 12, 1974.

Retied, June 24, 1974.

Removed cap for construction, June 20, 1984.

Granite monument down only 1 in., June 26, 1987.

Retied monument, May 1, 1990.

Retied monument, June 25, 1998.

Tied monument for removal by construction project, December 4, 2001.

Reset monument location; set 20 in. cast iron monument 18 in. down, contractor set pipe and manhole assembly, August 22, 2002.

Retied monument, March 23, 2005.