

MONUMENT 217E

CERTIFICATE OF LOCATION OF GOVERNMENT CORNER

Monument on the South line of the Southwest Quarter of Section 21,
Township 30 North, Range 22 West, County of Ramsey, State of Minnesota.

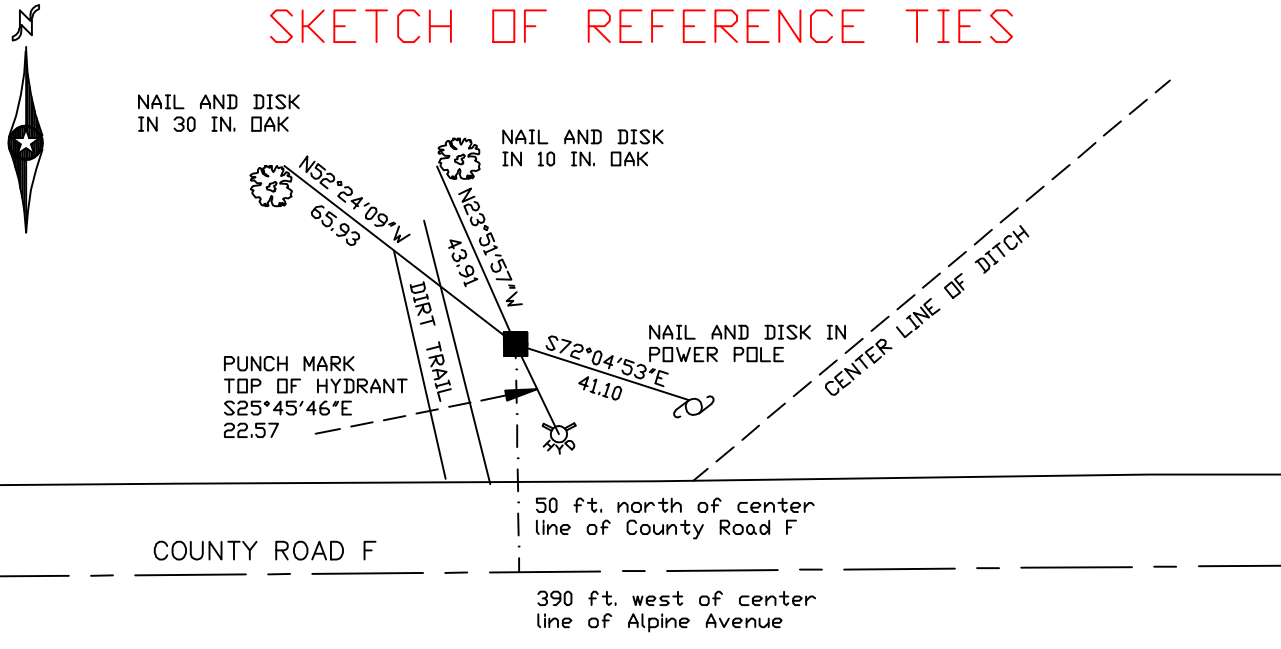
At the corner location shown on the sketch

On March 28, 2005 found a granite monument.

left monument as found lowered monument removed monument (explain)

On _____ placed a _____

SKETCH OF REFERENCE TIES



RAMSEY COUNTY
NAD83 (1986)
MONUMENT 217E
X= 583220.467 (Easting)
Y= 199963.843 (Northing)

ALL DISTANCES ARE SHOWN IN U.S. SURVEY FEET.
BEARINGS ARE FOR TIE REFERENCE PURPOSES ONLY.

Statements of evidence relative to this corner are on the following page(s).

I hereby certify that this document and the data contained herein was prepared by me or under my direct supervision this _____ day of _____, 20____.

SIGNATURE

Minnesota License No. _____

County Surveyor Land Surveyor

OFFICE OF COUNTY SURVEYOR

County of Ramsey

I hereby certify that this document was filed in the County Surveyor's office on the ____ day of _____, 20____.

David D. Claypool, P.L.S., County Surveyor

By _____, Deputy

MONUMENT 217E

Found granite monument down 0.1 ft., presumably the south one-sixteenth corner. Did not check and retied, October 21, 1974.

Retied monument, November 19, 1991.

Retied monument down 5 in., June 10, 1998.

Placed sign and post 1.3 ft. north, June 11, 1998.

Retied monument, March 28, 2005.