

MONUMENT 215

CERTIFICATE OF LOCATION OF GOVERNMENT CORNER

Northwest Corner of Section 29, Township 30 North, Range 22 West, County of Ramsey, State of Minnesota.

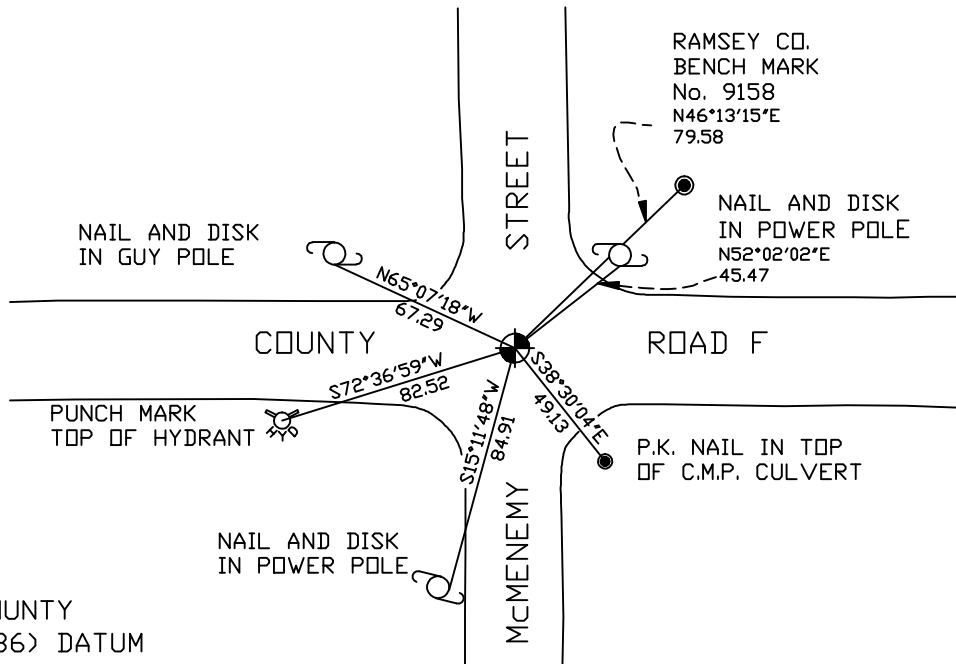
At the corner location shown on the sketch

On March 14, 2005 found a cast iron monument.

left monument as found lowered monument removed monument (explain)

On _____ placed a _____

SKETCH OF REFERENCE TIES



RAMSEY COUNTY
NAD83 (1986) DATUM

MONUMENT 215

X= 576642.436 (Easting)
Y= 199931.034 (Northing)

ALL DISTANCES ARE SHOWN IN U.S. SURVEY FEET.
BEARINGS ARE FOR TIE REFERENCE PURPOSES ONLY.

Statements of evidence relative to this corner are on the following page(s).

I hereby certify that this document and the data contained herein was prepared by me or under my direct supervision this _____ day of _____, 20____.

SIGNATURE

Minnesota License No. _____

County Surveyor Land Surveyor

OFFICE OF COUNTY SURVEYOR

County of Ramsey

I hereby certify that this document was filed in the County Surveyor's office on the ____ day of _____, 20____.

David D. Claypool, P.L.S., County Surveyor

By _____, Deputy

MONUMENT 215

Found cast iron monument up 0.05 ft. and retied, August, 1974.

Removed 20 in. cast iron, dug down +/- 2.1 ft. to stone (does not appear to be granite) for Maintenance Department, July 12, 1989.

Placed 20 in. cast iron monument in concrete, August 30, 1989.

Retied monument, May 1, 1990.

Retied monument, June 10, 1998.

Retied monument, June 11, 2001.

Retied monument, March 14, 2005.