

# MONUMENT 215E

## CERTIFICATE OF LOCATION OF GOVERNMENT CORNER

Monument on the South Line of the Southwest Quarter of Section 20,  
Township 30 North, Range 22 West, County of Ramsey, State of Minnesota.

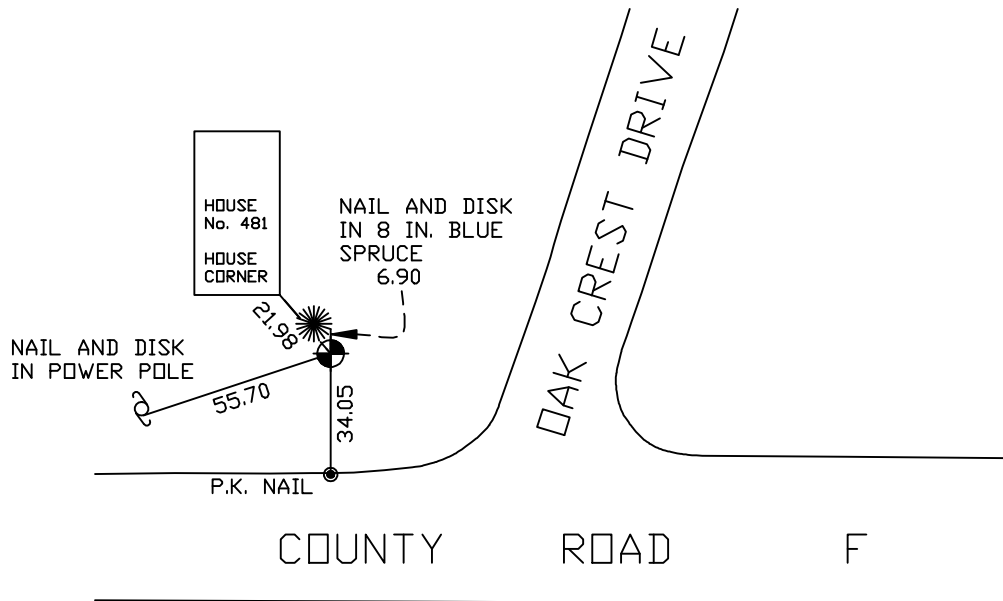
At the corner location shown on the sketch

On October 26, 2005 found a cast iron monument.

left monument as found     lowered monument     removed monument (explain)

On \_\_\_\_\_ placed a \_\_\_\_\_

### SKETCH OF REFERENCE TIES



RAMSEY COUNTY  
NAD83 (1986) DATUM

MONUMENT 215E

X= 577887.468 (Easting)  
Y= 199943.183 (Northing)

ALL DISTANCES ARE SHOWN IN U.S. SURVEY FEET.

Statements of evidence relative to this corner are on the following page(s).

I hereby certify that this document and the data  
contained herein was prepared by me or under  
my direct supervision this \_\_\_\_\_ day  
of \_\_\_\_\_, 20\_\_\_\_.

SIGNATURE

Minnesota License No. \_\_\_\_\_

County Surveyor     Land Surveyor

OFFICE OF COUNTY SURVEYOR

County of Ramsey

I hereby certify that this document was filed in  
the County Surveyor's office on the \_\_\_\_ day  
of \_\_\_\_\_, 20\_\_\_\_.

David D. Claypool, P.L.S., County Surveyor

By \_\_\_\_\_, Deputy

## MONUMENT 215E

**Found cast iron monument down 0.4 ft. on slope and retied, 1975.**

**Checked monument, July 8, 1987.**

**Placed sign and post +/-1.5 ft. south of monument, August 14, 1989.**

**Retied monument, November 19, 1991.**

**Retied monument, June 10, 1998.**

**Retied monument, October 26, 2005.**