

MONUMENT 214

CERTIFICATE OF LOCATION OF GOVERNMENT CORNER

South Quarter Corner of Section 19, Township 30 North, Range 22 West,
County of Ramsey, State of Minnesota.

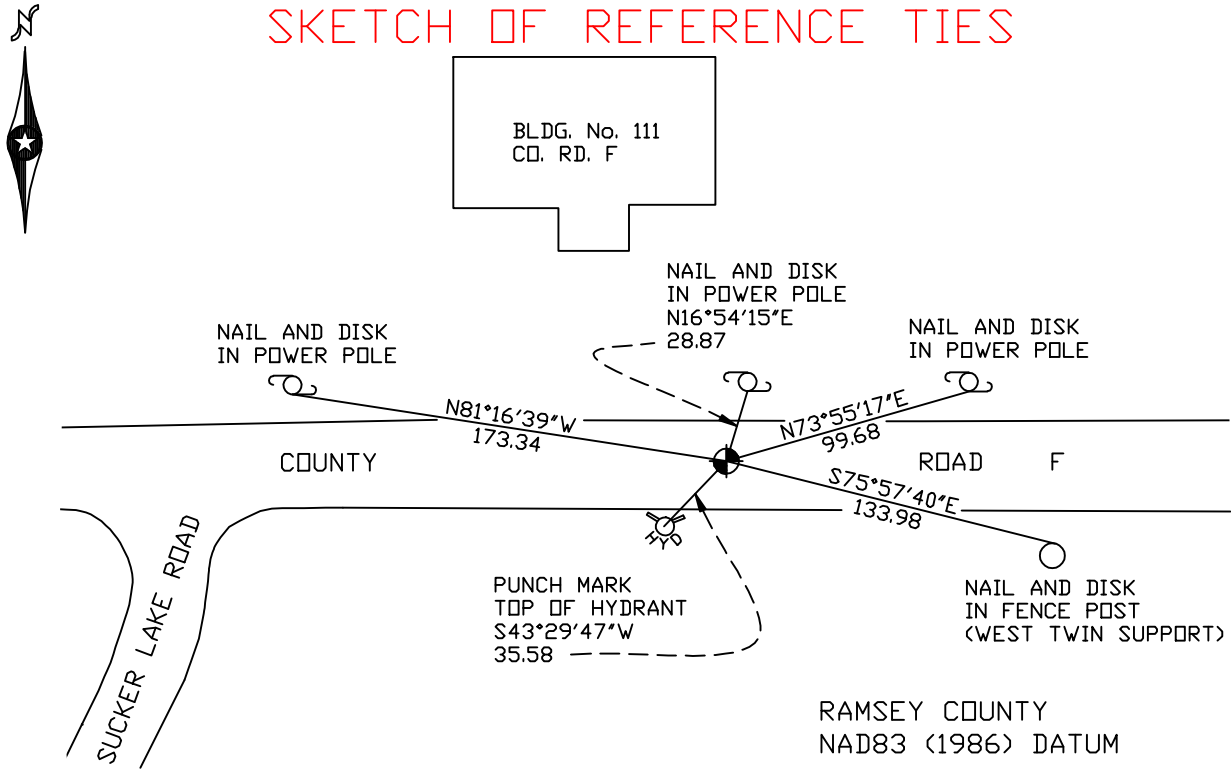
At the corner location shown on the sketch

On March 14, 2005 found a cast iron monument.

left monument as found lowered monument removed monument (explain)

On _____ placed a _____

SKETCH OF REFERENCE TIES



ALL DISTANCES ARE SHOWN IN U.S. SURVEY FEET.
BEARINGS ARE FOR TIE REFERENCE PURPOSES ONLY.

X= 574006.664 (Easting)
Y= 199916.806 (Northing)

Statements of evidence relative to this corner are on the following page(s).

I hereby certify that this document and the data contained herein was prepared by me or under my direct supervision this _____ day of _____, 20____.

SIGNATURE

Minnesota License No. _____

County Surveyor Land Surveyor

OFFICE OF COUNTY SURVEYOR

County of Ramsey

I hereby certify that this document was filed in the County Surveyor's office on the ____ day of _____, 20____.

David D. Claypool, P.L.S., County Surveyor

By _____, Deputy

MONUMENT 214

Found railroad spike down 0.1 ft., 1975.

Granite under spike, placed short cast iron, 1976.

Tied monument; down 0.1 ft., August 3, 1981.

Removed cast iron so that maintenance could grind up road, July 12, 1989.

Reset position using ties, August 29, 1989.

Dug through new asphalt and found granite monument down 0.8 ft. and set 4½ in. cast iron over granite in concrete, August 30, 1989 .

Retied monument, May 1, 1990.

Retied monument, June 10, 1998.

Retied monument, March 14, 2005.