

# MONUMENT 213

## CERTIFICATE OF LOCATION OF GOVERNMENT CORNER

Northwest Corner of Section 30, Township 30 North, Range 22 West, County of Ramsey, State of Minnesota.

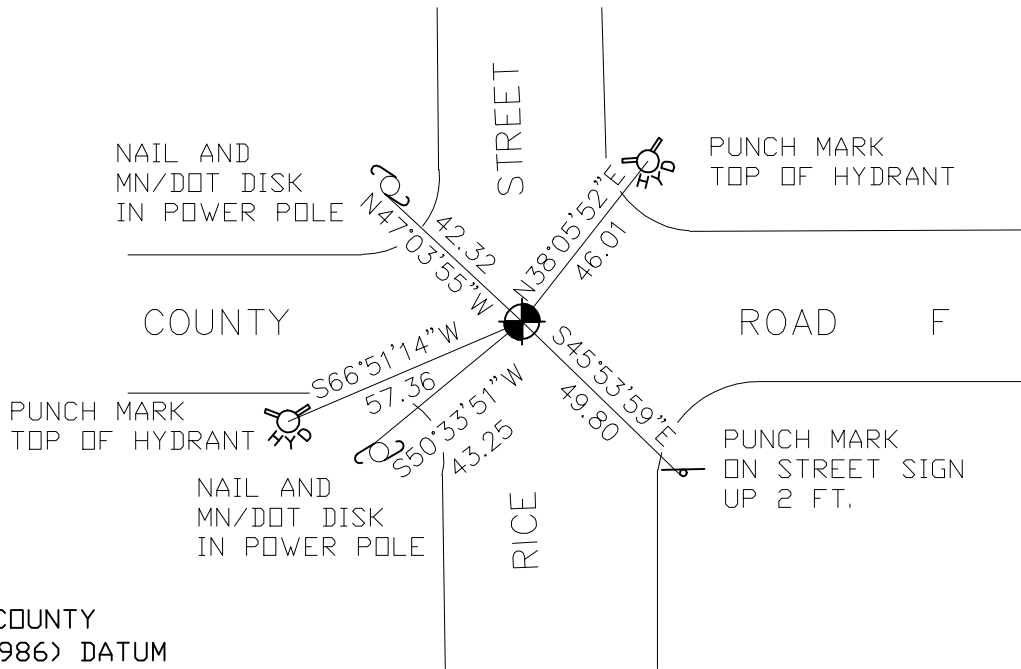
At the corner location shown on the sketch

On March 14, 2005 found a cast iron monument.

left monument as found     lowered monument     removed monument (explain)

On \_\_\_\_\_ placed a \_\_\_\_\_

### SKETCH OF REFERENCE TIES



RAMSEY COUNTY  
NAD83 (1986) DATUM

MONUMENT 213

X= 571569.032 (Easting)  
Y= 199902.974 (Northing)

ALL DISTANCES ARE SHOWN IN U.S. SURVEY FEET.  
BEARINGS ARE FOR TIE REFERENCE PURPOSES ONLY.

Statements of evidence relative to this corner are on the following page(s).

I hereby certify that this document and the data contained herein was prepared by me or under my direct supervision this \_\_\_\_\_ day of \_\_\_\_\_, 20\_\_\_\_.

SIGNATURE

Minnesota License No. \_\_\_\_\_

County Surveyor     Land Surveyor

OFFICE OF COUNTY SURVEYOR

County of Ramsey

I hereby certify that this document was filed in the County Surveyor's office on the \_\_\_\_ day of \_\_\_\_\_, 20\_\_\_\_.

David D. Claypool, P.L.S., County Surveyor

By \_\_\_\_\_, Deputy

## MONUMENT 213

**Found granite monument down 0.3 ft., retied, 1975.**

**Cast iron cap and bolt monument placed, no date given in field book.**

**Retied cast iron monument, February 1, 1991.**

**Removed cap and bolt monument for Maintenance Department, July 10, 1992.**

**Set  $4\frac{5}{8}$  in. cast iron monument with "Quick Set 45" concrete,  
November 10, 1992.**

**Retied monument, June 10, 1998.**

**Retied monument, March 14, 2005.**