

# MONUMENT 209

## CERTIFICATE OF LOCATION OF GOVERNMENT CORNER

Northeast Corner of Section 27, Township 30 North, Range 23 West, County of Ramsey, State of Minnesota.

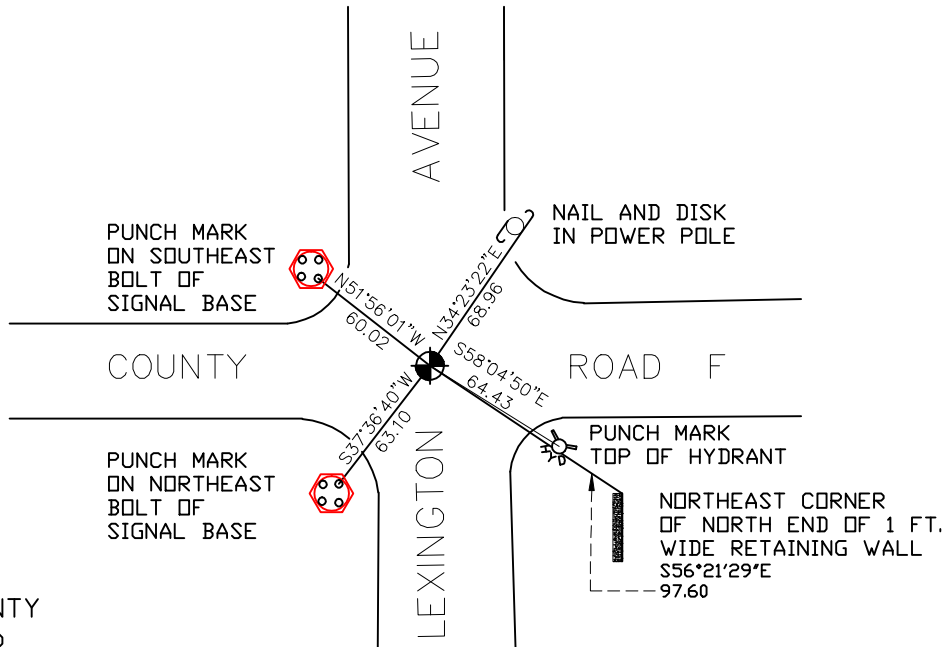
At the corner location shown on the sketch

On March 14, 2005 found a cast iron monument within a cast iron manhole assembly.

left monument as found     lowered monument     removed monument (explain)

On \_\_\_\_\_ placed a \_\_\_\_\_

## SKETCH OF REFERENCE TIES



RAMSEY COUNTY  
NAD83 (1986)

MONUMENT 209

X= 561012.137 (Easting)  
Y= 199845.246 (Northing)

ALL DISTANCES ARE SHOWN IN U.S. SURVEY FEET.  
BEARINGS ARE FOR TIE REFERENCE PURPOSES ONLY.

Statements of evidence relative to this corner are on the following page(s).

I hereby certify that this document and the data contained herein was prepared by me or under my direct supervision this \_\_\_\_\_ day of \_\_\_\_\_, 20\_\_\_\_.

SIGNATURE

Minnesota License No. \_\_\_\_\_

County Surveyor     Land Surveyor

OFFICE OF COUNTY SURVEYOR

County of Ramsey

I hereby certify that this document was filed in the County Surveyor's office on the \_\_\_\_ day of \_\_\_\_\_, 20\_\_\_\_.

David D. Claypool, P.L.S., County Surveyor

By \_\_\_\_\_, Deputy

## MONUMENT 209

**Found iron pipe in concrete, granite monument down 0.31 ft., placed bolt and cast iron cap, July 17, 1975.**

**Retied monument, July 28, 1975.**

**Monuments removed by Ramsey County Construction department; set 20 in. cast iron monument after construction was completed, 1983.**

**Retied monument, February 1, 1991.**

**Tied out monument, April 21, 2000.**

**Lowered monument and set 18 in. pipe, April 28, 2000.**

**Set cast iron manhole assembly, June 15, 2000.**

**Retied monument, March 14, 2005.**