

# MONUMENT 206N

## CERTIFICATE OF LOCATION OF GOVERNMENT CORNER

Monument on the North-South Quarter Line, South of the Center of Section 21, Township 30 North, Range 23 West, County of Ramsey, State of Minnesota.

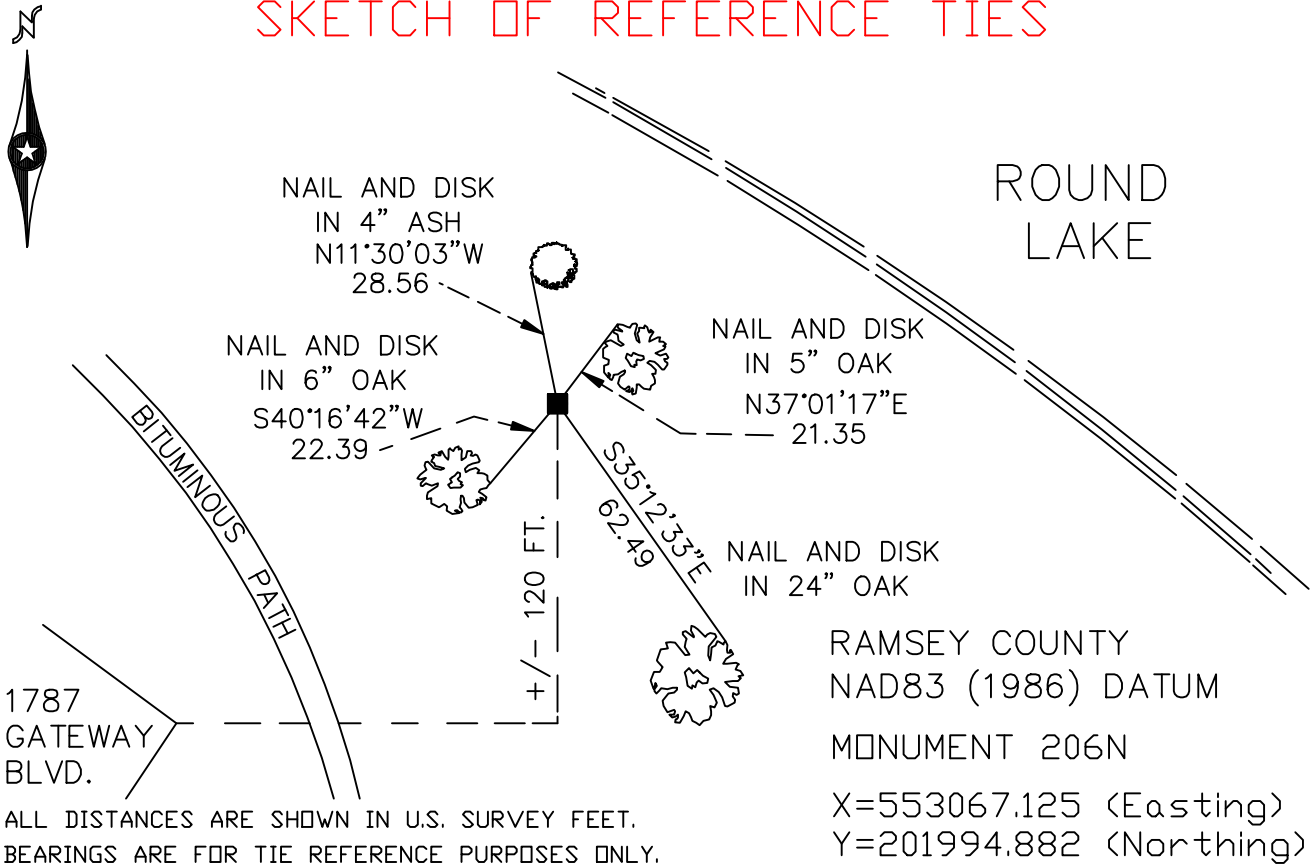
At the corner location shown on the sketch

On March 15, 2005 found a granite monument.

left monument as found,  lowered monument,  removed monument (explain)

On \_\_\_\_\_ placed a \_\_\_\_\_

### SKETCH OF REFERENCE TIES



Statements of evidence relative to this corner are on the following page(s).

I hereby certify that this document and the data contained herein was prepared by me or under my direct supervision this \_\_\_\_\_ day of \_\_\_\_\_, 20\_\_\_\_.

SIGNATURE

Minnesota License No. \_\_\_\_\_

- Land Surveyor       Professional Engineer  
 County Surveyor     County Engineer

OFFICE OF COUNTY SURVEYOR

County of Ramsey

I hereby certify that this document was filed in the County Surveyor's office on the \_\_\_\_ day of \_\_\_\_\_, 20\_\_\_\_.

David D. Claypool, P.L.S., County Surveyor

By \_\_\_\_\_, Deputy

## MONUMENT 206N

**Found granite monument up 0.5 ft., retied, June 7, 1980.**

**Granite monument up 0.4 ft. placed sign and post 1 ft. north of monument and retied, October 1, 1993.**

**Retied monument, March 15, 2005.**