

# MONUMENT 19E

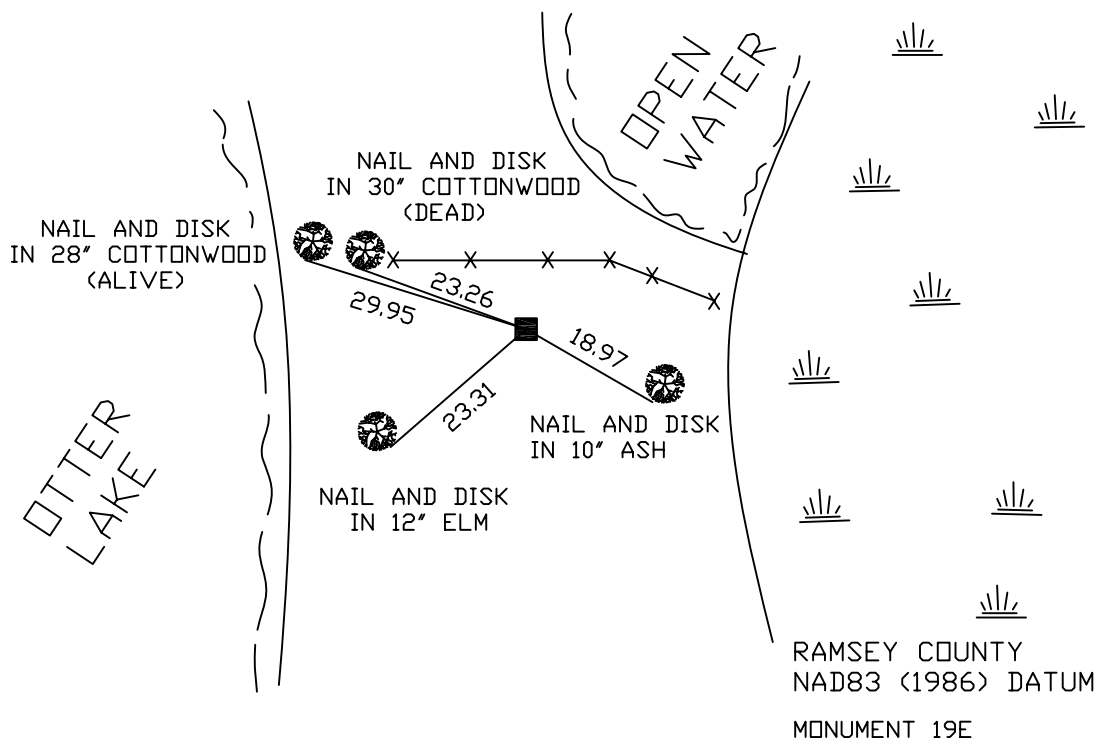
## CERTIFICATE OF LOCATION OF GOVERNMENT CORNER

Meander Corner No. 17, Section 3, Township 30 North, Range 22 West,  
County of Ramsey, State of Minnesota.

At the corner location shown on the sketch

- On October 11, 2005 found a granite monument, (2744.41 ft. west of monument 21SC).
- left monument as found,  lowered monument,  removed monument (explain)
- On \_\_\_\_\_ placed a \_\_\_\_\_

### SKETCH OF REFERENCE TIES



RAMSEY COUNTY  
NAD83 (1986) DATUM  
MONUMENT 19E  
X=589657.078 (Easting)  
Y=221526.862 (Northing)  
MONUMENT IS ON 3RD CORRECTION LINE.

ALL DISTANCES ARE SHOWN IN U.S. SURVEY FEET.

Statements of evidence relative to this corner are on the following page(s).

I hereby certify that this document and the data contained herein was prepared by me or under my direct supervision this \_\_\_\_\_ day of \_\_\_\_\_, 20\_\_\_\_.

SIGNATURE

Minnesota License No. \_\_\_\_\_

- Land Surveyor       Professional Engineer  
 County Surveyor     County Engineer

#### OFFICE OF COUNTY SURVEYOR

County of Ramsey

I hereby certify that this document was filed in the County Surveyor's office on the \_\_\_\_\_ day of \_\_\_\_\_, 20\_\_\_\_.

David D. Claypool, P.L.S., County Surveyor

By \_\_\_\_\_, Deputy

## MONUMENT 19E

Found granite monument, down 0.2 ft., retied and rolled a yellow painted boulder over next to fence, May 10, 1974.

Granite monument, down +/-0.4 ft.; sign and post 1.0 ft. south of monument; retied monument, December 28, 1992.

Retied monument, June 15, 1998.

Retied monument, October 11, 2005.