

MONUMENT 197N

CERTIFICATE OF LOCATION OF GOVERNMENT CORNER

Monument on the North-South Quarter Line, North of Center of Section 23,
Township 30 North, Range 22 West, County of Ramsey, State of Minnesota.

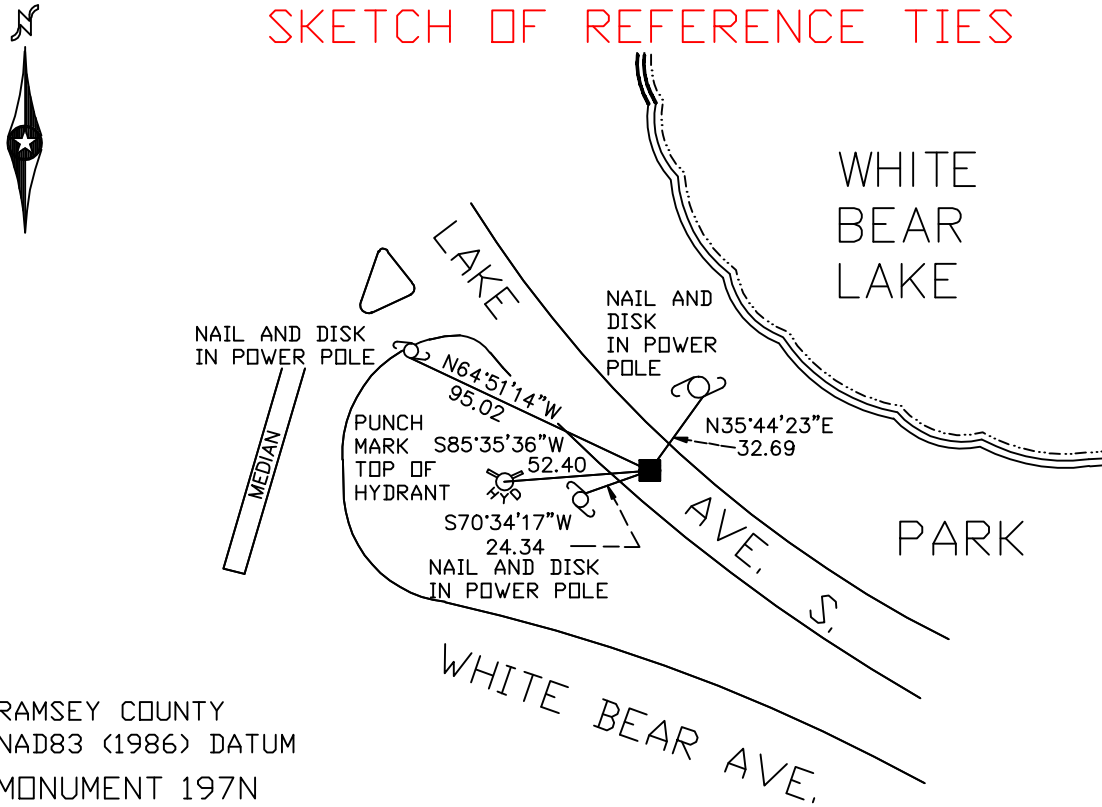
At the corner location shown on the sketch

On July 28, 2005 found a granite monument within a cast iron manhole
assembly.

left monument as found lowered monument removed monument (explain)

On _____ placed a _____

SKETCH OF REFERENCE TIES



RAMSEY COUNTY
NAD83 (1986) DATUM

MONUMENT 197N

X= 595054.194 (Easting)
Y= 203263.487 (Northing)

ALL DISTANCES ARE SHOWN IN U.S. SURVEY FEET.
BEARINGS ARE FOR TIE REFERENCE PURPOSES ONLY.

Statements of evidence relative to this corner are on the following page(s).

I hereby certify that this document and the data
contained herein was prepared by me or under
my direct supervision this _____ day
of _____, 20____.

SIGNATURE

Minnesota License No. _____

County Surveyor Land Surveyor

OFFICE OF COUNTY SURVEYOR

County of Ramsey

I hereby certify that this document was filed in
the County Surveyor's office on the ____ day
of _____, 20____.

David D. Claypool, P.L.S., County Surveyor

By _____, Deputy

MONUMENT 197N

Found granite monument flush in concrete pavement, June 12, 1975.

Retied monument, March 22, 1976.

Monument down +/- 0.4 ft. and retied, January 17, 1991.

Retied monument, August 27, 1999.

Granite monument down 0.4 ft.; placed cast iron manhole assembly around granite monument, July 27, 2005.

Retied monument, July 28, 2005.